

ILLUSTRATIONS FOR  
**THE ALEXANDER SMITH FAMILY OF  
BUNCOMBE COUNTY, NORTH CAROLINA  
c1770–2022**

Featuring his sons William Berry Smith and James M. Smith,  
who fought at San Jacinto, and their families of Texas and New Mexico

And their brother Joel N. Smith,  
who founded the Cocke County, Tennessee branch

by  
*Alvy Ray Smith, FASG*

**This is a hyperlinked text file.**  
**It looks like a book but acts like a webpage:**

The top line of the title page is linked to the table of contents.

Each line in the table of contents is linked to its sketch.

The person atop a sketch is linked to its respective child line.

A child with a + sign is linked to its respective parent sketch.

Each line in the table of illustrations is linked to its picture.

Each footnote superscript is linked to its footnote.

The cursor changes to a pointing finger above a link. Then click.

Copyright ©2007–2022 by Alvy Ray Smith

All rights reserved. No part of this publication may be reproduced or transmitted in any form or by any means, electronic or mechanical, including photocopying, recording, or any information storage or retrieval system, without permission in writing from the copyright holder, except for the inclusion of brief quotations in a review.



Published by  
ARS LONGA  
publications imprint of  
Alvy Ray Smith, PhD, FASG  
Berkeley CA  
<alvyray.com>

**Bibliographic Reference:**

Alvy Ray Smith, FASG. *Illustrations for the Alexander Smith Family of Buncombe County, North Carolina*. Berkeley: Ars Longa, 2022. Please also cite the version number that appears on the title page.

## TABLE OF CONTENTS

TABLE OF ILLUSTRATIONS .....	iv
PICTURE CREDITS.....	vii
ILLUSTRATIONS.....	I

## Table of Illustrations

Figure 1. Relationships of the major families .....	I
Figure 2. Republic of Texas conditional second class land grant to Jesse R. <sup>3</sup> Smith, 2 Aug. 1838 .....	II
Figure 3. Republic of Texas unconditional second class land grant to Jesse R. <sup>3</sup> Smith, 7 Dec. 1841 .....	IV
Figure 4. Jesse R. <sup>3</sup> Smith's autograph on a Texas land deed, 29 Aug. 1848 .....	V
Figure 5. Jesse <sup>3</sup> Smith's autograph on a power of attorney, 6 Oct. 1853 .....	VI
Figure 6. Jesse R. <sup>3</sup> Smith payment for the Somervell campaign .....	VII
Figure 7. Jesse R. <sup>3</sup> Smith's discharge by Joseph L. Bennett and William M. Barrett .....	VII
Figure 8. Phineas Watkins Hudman family on his burial day .....	VIII
Figure 9. Lucretia "Crishy" (Gililland) and Ben <sup>4</sup> Smith, 1904, with some children, left to right: George <sup>5</sup> , Ray <sup>5</sup> , Grace <sup>5</sup> , Jim <sup>5</sup> , and Rose <sup>5</sup> .....	IX
Figure 10. Smith <sup>5</sup> siblings, as labeled .....	X
Figure 11. Ben <sup>5</sup> Smith Jr., Harley <sup>6</sup> Wills, Margaret (Wilson) and Ben <sup>4</sup> Smith, about 1931 .....	XI
Figure 12. Benjamin Benton <sup>4</sup> Smith, Gilbert Wilson (Mary's brother), and Henry <sup>7</sup> Slate (Mary's first husband's younger brother), Eddy, N.M., c1882? .....	XII
Figure 13. Benjamin B. <sup>4</sup> and Mary Margaret Smith gravestone and burial plot .....	XIII
Figure 14. Lucretia Ann Gililland's grave and her great-great-grandson Samuel Eli <sup>8</sup> Smith .....	XIV
Figure 15. James William <sup>5</sup> Smith, wedding photo .....	XV
Figure 16. Ima Naomi (Johnson) Smith, wedding photo .....	XVI
Figure 17. Ray <sup>5</sup> and Maudie (McKindrey) Smith, wedding 1914 .....	XVII
Figure 18. Ray <sup>5</sup> Smith (center) with his children, left to right: Alvy <sup>6</sup> , Lucy <sup>6</sup> , Margaret <sup>6</sup> , and Lawrence <sup>6</sup> .....	XVIII
Figure 19. Ray <sup>5</sup> Smith's second wife, Nellie Pearl (Latham) Posey, c1945, as a Rosie the Riveter, and page from book of autographs from fellow "riveters." .....	XIX



Figure 20. Ray <sup>5</sup> Smith's and Pearl's gravestones, Eckert, Colo. ....	XIX
Figure 21. Wilma Ruthena ["Ruth"] <sup>6</sup> Smith.....	XX
Figure 22. Margaret <sup>6</sup> (Smith) Coleman .....	XXI
Figure 23. Edith (Sanders) and Alvy <sup>6</sup> Smith .....	XXII
Figure 24. Marker placed at Flossenbürg concentration camp by survivors, in honor of their liberation by the 97th Division .....	XXIII
Figure 25. Lucy <sup>6</sup> (Smith) and George Gray.....	XXIV
Figure 26. Rita Louise <sup>7</sup> Smith.....	XXV
Figure 27. Alvy Ray <sup>7</sup> Smith and his wife, Alison Gopnik.....	XXVI
Figure 28. The Lockwoods, Todd <sup>8</sup> , Doug, Joy <sup>8</sup> , Lynn <sup>7</sup> , at Joy's graduation, with grandparents Edith and Alvy <sup>6</sup> Smith, 1999.....	XXVII
Figure 29. Survey field notes for Jesse R. <sup>3</sup> Smith's Texas land, Oct. 1840, with small map.....	XXVII
Figure 30. Kenneth Rea <sup>8</sup> Whitley and his wife Rena, 2010 .....	XXVIII
Figure 31. The James Lowery <sup>3</sup> and Julia (McDowell) Smith family ...	XXIX
Figure 32. John Milam <sup>4</sup> Smith and family .....	XXX
Figure 33. William Berry <sup>2</sup> Smith .....	XXXI
Figure 34. Mary Ann (Ashmore) Smith, wife of William Berry <sup>2</sup> .....	XXXII
Figure 35. James <sup>2</sup> Smith's discharge affidavit of 20 May 1837 .....	XXXIII
Figure 36. From left: William Forrest <sup>4</sup> Smith, Frankie Lu Ann <sup>6</sup> (Smith) Campbell, Joseph Henry <sup>5</sup> Smith, John David <sup>6</sup> Smith, Lula Lee (Anderson) Smith, Bessie (Zidek) Smith.....	XXXIV
Figure 37. William Crawford Family Bible, p. 1 (see bibliography). .	XXXV
Figure 38. William Crawford Family Bible, p. 2 (see bibliography). .	XXXVI
Figure 39. Elijah Franklin <sup>4</sup> Smith and his wife Fanny (Fannie). ...	XXXVII
Figure 40. The Elijah Franklin <sup>4</sup> Smith family.....	XXXVIII
Figure 41. The Elijah Franklin <sup>4</sup> Smith Family Bible record.....	XXXIX
Figure 42. Arthur Alton <sup>5</sup> Smith, president of C&H Sugar.....	XL
Figure 43. Map of Hawkins County, Tenn., 1836.....	XLI
Figure 44. Buncombe Co. deed, Alexander Smith, 21 Jan. 1803.....	XLII
Figure 45. Buncombe Co. deed, Alexander Smith, 3 July 1810 .....	XLIII
Figure 46. Buncombe Co., N.C., deed, Smith heirs to Robertson, 4 Oct. 1833 .....	XLIV

Figure 47. Signature page, Buncombe Co., N.C., deed of Smith heirs, 4 Oct. 1833 .....	XLV
Figure 48. Buncombe Co., N.C., deed, Jesse Smith (heir) to Robison, 12 Feb. 1834 .....	XLVI
Figure 49. Buncombe Co., N.C., deed, Nancy (Smith) Brown (heir) to Robeson, 16 Mar. 1844.....	XLVII
Figure 50. Buncombe Co., N.C., deed, Robeson to Robeson, 19 Nov. 1849 .....	XLVIII
Figure 51. p. 3 of testimony of Elizabeth <sup>2</sup> (Smith) Lovinggood, 28 Aug. 1877 .....	XLIX
Figure 52. p. 4 of testimony of Elizabeth <sup>2</sup> (Smith) Lovinggood, 28 Aug. 1877 .....	L
Figure 53. Gravestone of Samuel, husband of Elizabeth <sup>2</sup> (Smith) Lovinggood .....	LI
Figure 54. Siblings and half siblings of Cynthia J. (Smith) Ford.....	LII
Figure 55. James M. <sup>2</sup> Smith, of Pickens Co., Ala., parcel, 1824 .....	LIII
Figure 56. Map of Cocke Co., Tenn. ....	LIV

## Picture Credits

- Figure 1. Created by me.
- Figure 2. From my collection of Jesse Smith's Texian papers.
- Figure 3. From my collection of Jesse Smith's Texian papers.
- Figure 4. From my collection of Jesse Smith's Texian papers.
- Figure 5. *Texas State Library, Archives and Manuscripts, Republic Claims*, <tslarc.tsl.state.tx.us/repclaims/186/18600464.pdf>. Contributed by Ken Whitley.
- Figure 6. *Texas State Library, Archives and Manuscripts, Republic Claims*, <tslarc.tsl.state.tx.us/repclaims/186/18600477.pdf>.
- Figure 7. *Texas State Library, Archives and Manuscripts, Republic Claims*, <tslarc.tsl.state.tx.us/repclaims/186/18600475.pdf>.
- Figure 8. From the collection of Linda Dyer.
- Figure 9. From the collection of Alvy Smith (my father).
- Figure 10. From the collection of Christine Smith.
- Figure 11. From the collection of Alvy Smith (my father).
- Figure 12. From the collection of Bill Wilson.
- Figure 13. From my collection. Photographs and composition mine.
- Figure 14. From my collection. Photographs and composition mine.
- Figure 15. From the collection of Linda Anderson.
- Figure 16. From the collection of Linda Anderson.
- Figure 17. From the collection of Alvy Smith (my father).
- Figure 18. From the collection of Alvy Smith (my father).
- Figure 19. Contributed by Pearl's descendant, Sam Scarborough.
- Figure 20. From *Find a Grave*, nos. 26530477 and no. 26530481.
- Figure 21. From the collection of Linda Anderson.
- Figure 22. From the collection of Margaret Coleman.
- Figure 23. From the collection of Alvy Smith (my father).
- Figure 24. From *Third Reich in Ruins*, <www.thirdreichruins.com/flossen-burg.htm>, Geoffrey R. Walden.
- Figure 25. From the collection of George and Lucy Gray.
- Figure 26. From the collection of Alvy Smith (my father).

Figure 27. Photograph courtesy of George Dyson.

Figure 28. From the collection of Lynn (Smith) (Lockwood) Aucutt.

Figure 29. From my collection of Jesse Smith's Texian papers.

Figure 30. From the collection of Ken Whitley.

Figure 31. From the collection of Christine Smith, who provided the caption information. She obtained the information from Adah (Schafer) Smith's daughter, Roberta Lee<sup>6</sup>, 90, still living as of 17 Jan. 2011 in Florida. The photo was taken to her by her daughter, Kate Dwyer (email from Christine, 17 and 19 Jan. 2011). Christine also obtained information from Peter Maffitt, son of Rosalee<sup>5</sup> (Smith) Maffitt, who had a copy of the photo (email 19 Jan. 2011) with names on the back, presumably placed there by Rosalee.

Figure 32. From the collection of Christine Smith.

Figure 33. From the collection of Christine Smith. The identity of William Berry<sup>2</sup> Smith was verified by his granddaughter, Roxalee<sup>4</sup> (Smith) Andrews, according to her daughter-in-law, Christine Smith (email of 17 Jan. 2011).

Figure 34. From the collection of Christine Smith.

Figure 35. *Texas State Library, Archives and Manuscripts, Republic Claims*, <tslarc.tsl.state.tx.us/repclaims/97/09700501.pdf>. Contributed by Ken Whitley.

Figure 36. From the collection of Kathy<sup>7</sup> Cooper.

Figure 37. Contributed to <Ancestry.com> by Peggy Ann James Weyel.

Figure 38. Contributed to <Ancestry.com> by Peggy Ann James Weyel.

Figure 39. From the collection of Richard<sup>7</sup> Bills.

Figure 40. From the collection of Robert<sup>8</sup> Gleason.

Figure 41. From the collection of Robert<sup>8</sup> Gleason.

Figure 42. From the collection of Robert<sup>8</sup> Gleason.

Figure 43. From <freepages.genealogy.rootsweb.ancestry.com/~berry/-newupload/figures/hawkins\_county\_1836\_tax\_districts.jpg>.

Figure 44. From <www.FamilySearch.org>, FHL online catalog.

Figure 45. From <www.FamilySearch.org>, FHL online catalog.

Figure 46. From <www.FamilySearch.org>, FHL online catalog. Courtesy of Judson<sup>6</sup> Lovingood, email 11 May 2016

Figure 47. From <www.FamilySearch.org>, FHL online catalog. Courtesy of Judson<sup>6</sup> Lovingood, email 11 May 2016

Figure 48. From <www.FamilySearch.org>, FHL online catalog.

Figure 49. From <www.FamilySearch.org>, FHL online catalog.

Figure 50. From <www.FamilySearch.org>, FHL online catalog.

Figure 51. Courtesy of Judson<sup>6</sup> Lovingood, email 12 May 2016

Figure 52. Courtesy of Judson<sup>6</sup> Lovingood, email 12 May 2016

Figure 53. Courtesy of Judson<sup>6</sup> Lovingood, email 21 May 2016

Figure 54. From <Ancestry.com>.

Figure 55. From <Ancestry.com>.

Figure 56. <familysearch.org/wiki/en/File:Tncocke.png>. downloaded 24 Feb. 2017, Creative Commons Attribution 3.0 Unported license, author Murphynw, a FamilySearch Research Wiki user, own work based on 2003 State/County Reference Wall Map, U.S. Census Bureau, created 30 Jan. 2013, description: County borders of Cocke County, Tennessee, USA, on a map of North Carolina and Tennessee.



## ILLUSTRATIONS

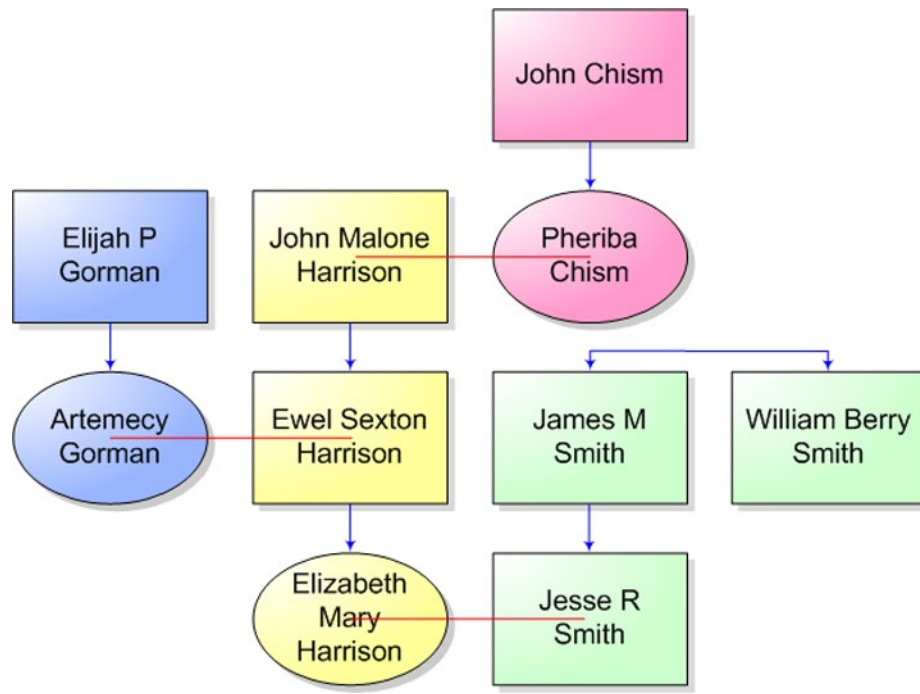


Figure 1. Relationships of the major families

Republic of } No } Texas  
 Montgomery } 2nd Class } County

This is to certify that Jesse R. Smith  
 has appeared before us the Board of  
 Land Commissioners for the County of  
 Montgomery and proved according to  
 Law that he arrived in this Republic  
 before 1<sup>st</sup> Decr 1837 and that he is a single  
 man and entitled to Six hundred and  
 fifty acres of Land which is secured  
 to him by this Certificate.

Given under our hands at the  
 Town of Montgomery the 2nd day of  
 August 1838

attested  
 W. B. Goodrich  
 Clerk

J. Ballard  
 J. L. Bennett  
 J. M. Bennett

J. M. Bennett

Figure 2. Republic of Texas conditional second class land grant to Jesse R.<sup>3</sup> Smith, 2 Aug. 1838



## ILLUSTRATIONS

### Transcription

Republic of Texas  
Montgomery County  
No 89  
2nd Class

This is to certify that Jesse R. Smith has appeared before us the Board of Land Commissioners for the County of Montgomery and proved according to Law that he arrived in this Republic before 1<sup>st</sup> Oct<sup>r</sup> 1837 and that he is a single man and entitled to six hundred and forty acres of Land which is secured to him by this Certificate.

Given under our hands at the Town of Montgomery the 2nd day of Aug. 1838

attest

B. B. Goodriche  
Clerk

[signed] S. Collard, Pres  
Ja<sup>s</sup>. L. Bennett  
H. McGuffin  
Ass Comms

Republic of Texas No 59  
 County of Montgomery ~~Class~~ Class Second

Jesse R Smith is entitled to six hundred and forty  
 Acres of Land by virtue of Certificate No 89 - dated  
 2nd August 1838 granted to him by the Board of  
 Land Commissioners for the County of Montgomery  
 he having proven to us that he has resided in the  
 Republic Three Years and performed all the duties  
 required of him as a citizen

Given under our hands at Montgomery  
 this 6th day of December 1841 *H. H. Griffin*  
 Chief Justice  
 And Es officio Just Board Land Commr

*E. H. Allen* Associates  
 attes  
 Gurn Morrison lclt County Court Secy  
 And Es officio lclt Board Land Commr  
 By  
 Wm Fowler Sept lclt

Figure 3. Republic of Texas unconditional second class land grant to Jesse R.<sup>3</sup> Smith, 7 Dec. 1841

## ILLUSTRATIONS

### Transcription

Republic of Texas  
County of Montgomery  
No 59  
Class Second

Jesse R Smith is entitled to Six hundred and forty Acres of Land by virtue of Certificate No 89, dated 2<sup>nd</sup> Aug. 1838 granted to him by the Board of Land Commissioners for the County of Montgomery he having proven to us that he has resided in the Republic Three years and performed all the duties required of him as a Citizen

Given under our hands at Montgomery this 7<sup>th</sup> day of Dec. 1841

[signed] H. McGuffin

Chief [sic] Justice

Ano Ex Officio Pre'st Board Land Com<sup>rs</sup>

E Uzzell, Associates

Attest

Gwyn Morrison Clk County Court [seal]

Ano Ex Officio Cl'k Board Land Com<sup>r</sup>

By

W<sup>m</sup> H Fowler Dept Clk

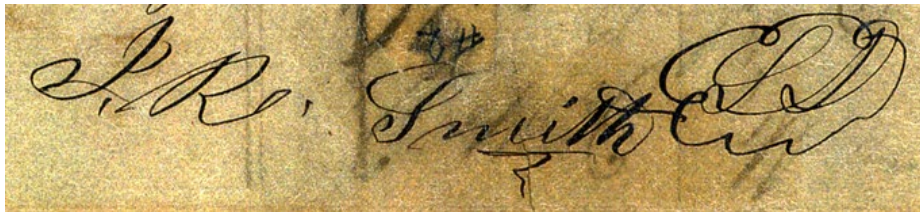
A photograph of a handwritten signature in cursive ink on aged, yellowed paper. The signature reads "J. R. Smith" followed by a large, ornate flourish. The paper shows signs of wear and discoloration.

Figure 4. Jesse R.<sup>3</sup> Smith's autograph on a Texas land deed, 29 Aug. 1848

State of Texas  
 Know all men by these presents  
 that Jesse Smith of above County & State,  
 for diverse good & valuable consideration, do by these  
 presents, make, constitute & appoint,  
 my true & lawful attorney, for me, and in my  
 name, to apply, ask, demand, & receive from the  
 proper officers of the Government of Texas, whatever  
 amount may be due me for services rendered  
 the late Republic, as will be seen by reference  
 to Auditor's certificate No. 391. & 392, dated Aug.  
 12, 1851, and in my name to do and perform  
 all & everything necessary to be done & performed  
 in the business aforesaid, as fully & completely, as  
 I myself could do, were I personally present  
 and acting for myself, and also invest said  
 with right of substitution & revocation as  
 to him may appear necessary, & hereby ratify all  
 acts done by my said attorney under this power.  
 Witness my hand & seal of said State, this 6th  
 day of October 1853.  
 Jesse Smith  
 E. B. Harrison  
 Th. Schleming

Figure 5. Jesse<sup>3</sup> Smith's autograph on a power of attorney, 6 Oct. 1853

Witnessed by E. [B?]. Harrison, who was probably Elijah Benton Harrison, Jesse's  
 brother-in-law, and Th. Schleming.

## ILLUSTRATIONS

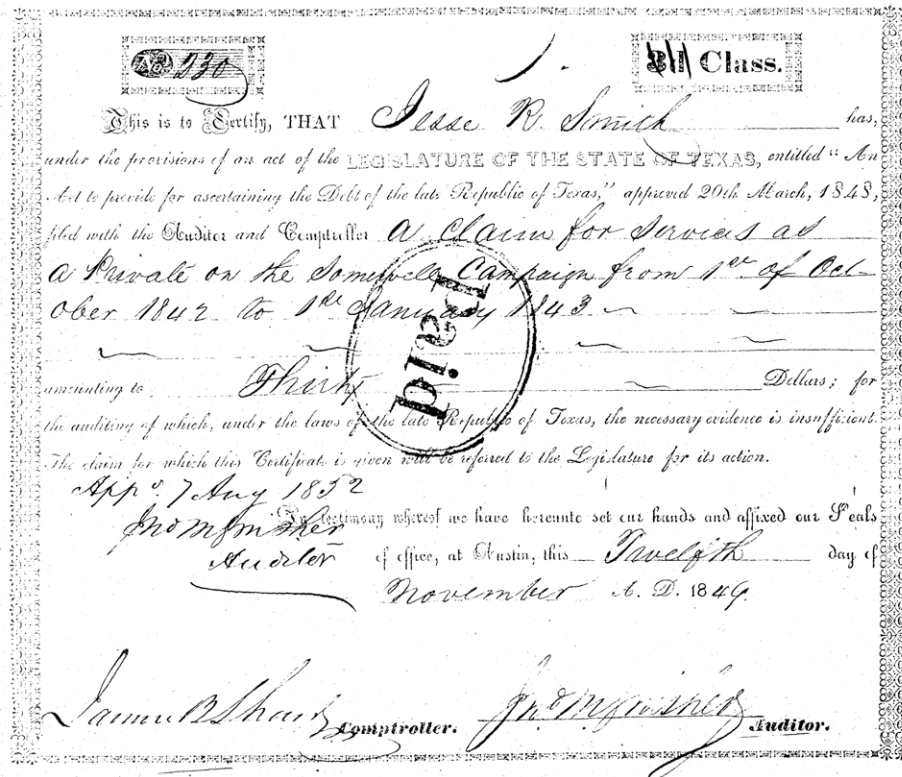


Figure 6. Jesse R.<sup>3</sup> Smith payment for the Somervell campaign

This is to certify that Jesse R. Smith was Mustered into service at the Town of Montgomery Oct 1st 1842 in Bat. No and served until January 1st 1843 and performed all the duties of private and is hereby honorably discharged.

J. L. Bennett 1st Lt. Commandant Wm. M. Barrett Capt of Bat. No 6 Montgomery Regt Santhorst's

Figure 7. Jesse R.<sup>3</sup> Smith's discharge by Joseph L. Bennett and William M. Barrett



Figure 8. Phineas Watkins Hudman family on his burial day

Back row from left: Thomas W., Joseph Asa, Phineas Wilburn<sup>5</sup>, John Benjamin, Jesse<sup>5</sup>, and Samuel Vernon Hudman. Middle row: Sophronia M. ["Dona"]<sup>5</sup>, Bessie E.<sup>3</sup>, Harriet ["Hattie"]<sup>5</sup>, and Mary E. ["Mame"]<sup>5</sup>. Front row: Elmer Watkins, Robert Fannin<sup>5</sup>, Floyd<sup>5</sup>, Lloyd<sup>5</sup>, and Henry Paul<sup>5</sup> Hudman.

## ILLUSTRATIONS



Figure 9. Lucretia “Crishy” (Gililand) and Ben<sup>4</sup> Smith, 1904, with some children, left to right: George<sup>5</sup>, Ray<sup>5</sup>, Grace<sup>5</sup>, Jim<sup>5</sup>, and Rose<sup>5</sup>





**F-Alvy Ray, Rosa May, C-Albert Leter, B-Rich, Grace**

Figure 10. Smith<sup>5</sup> siblings, as labeled



## ILLUSTRATIONS



Figure 11. Ben<sup>5</sup> Smith Jr., Harley<sup>6</sup> Wills, Margaret (Wilson) and Ben<sup>4</sup> Smith, about 1931

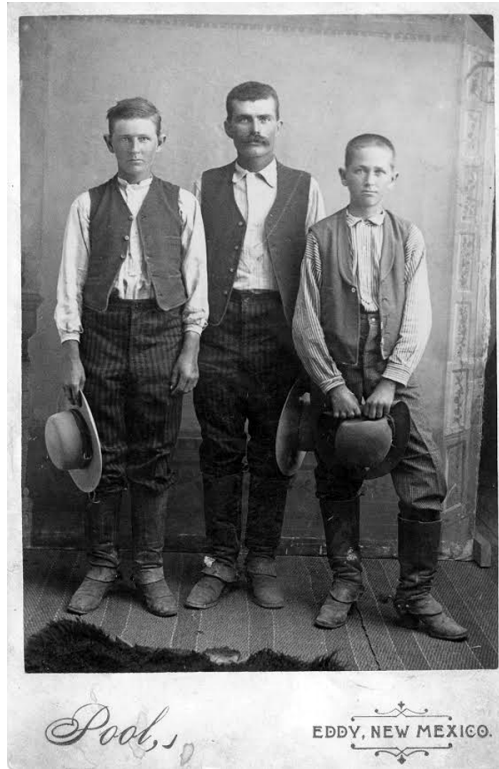


Figure 12. Benjamin Benton<sup>4</sup> Smith, Gilbert Wilson (Mary's brother), and Henry? Slate (Mary's first husband's younger brother), Eddy, N.M., c1882?

## ILLUSTRATIONS



Figure 13. Benjamin B.<sup>4</sup> and Mary Margaret Smith gravestone and burial plot



Figure 14. Lucretia Ann Gililland's grave and her great-great-grandson Samuel Eli<sup>8</sup> Smith

## ILLUSTRATIONS



Figure 15. James William<sup>5</sup> Smith, wedding photo





Figure 16. Ima Naomi (Johnson) Smith, wedding photo

## ILLUSTRATIONS



Figure 17. Ray<sup>5</sup> and Maudie (McKindrey) Smith, wedding 1914



Figure 18. Ray<sup>5</sup> Smith (center) with his children, left to right: Alvy<sup>6</sup>, Lucy<sup>6</sup>, Margaret<sup>6</sup>, and Lawrence<sup>6</sup>



## ILLUSTRATIONS

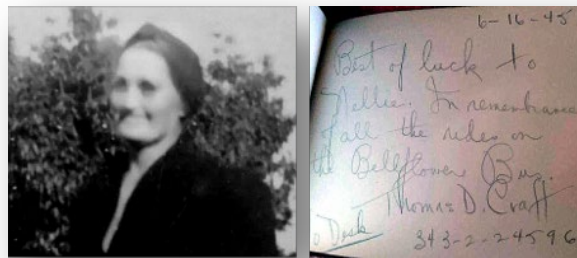


Figure 19. Ray<sup>5</sup> Smith's second wife, Nellie Pearl (Latham) Posey, c1945, as a Rosie the Riveter, and page from book of autographs from fellow "riveters."



Figure 20. Ray<sup>5</sup> Smith's and Pearl's gravestones, Eckert, Colo.

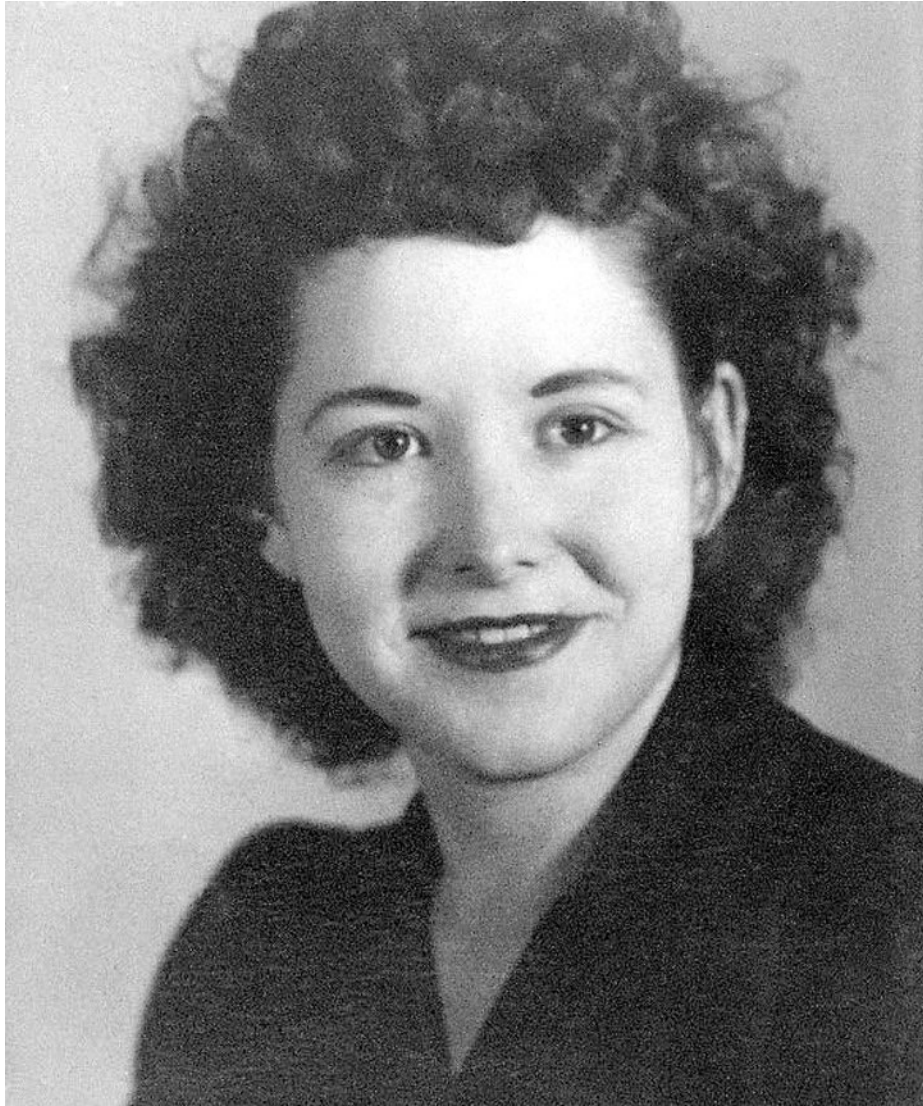


Figure 21. Wilma Ruthena ["Ruth"]<sup>6</sup> Smith

## ILLUSTRATIONS



Figure 22. Margaret<sup>6</sup> (Smith) Coleman



Figure 23. Edith (Sanders) and Alvy<sup>6</sup> Smith

## ILLUSTRATIONS



Figure 24. Marker placed at Flossenbürg concentration camp by survivors, in honor of their liberation by the 97th Division





Figure 25. Lucy<sup>6</sup> (Smith) and George Gray

## ILLUSTRATIONS



Figure 26. Rita Louise<sup>7</sup> Smith



Figure 27. Alvy Ray<sup>7</sup> Smith and his wife, Alison Gopnik  
At John von Neumann's plaque at the Institute for Advanced Study, Princeton, N.J.  
Von Neumann's computer was built in this building, now a childcare center.



## ILLUSTRATIONS



Figure 28. The Lockwoods, Todd<sup>8</sup>, Doug, Joy<sup>8</sup>, Lynn<sup>7</sup>, at Joy's graduation, with grandparents Edith and Alvy<sup>6</sup> Smith, 1999

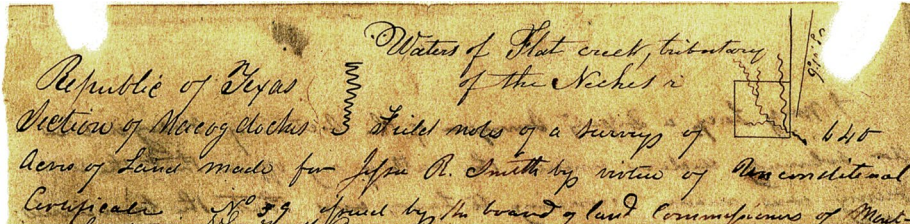


Figure 29. Survey field notes for Jesse R.<sup>3</sup> Smith's Texas land, Oct. 1840, with small map



Figure 30. Kenneth Rea<sup>8</sup> Whitley and his wife Rena, 2010

## ILLUSTRATIONS



Figure 31. The James Lowery<sup>3</sup> and Julia (McDowell) Smith family

Family group portrait from left to right: Top row: Jake Ralston, Julia C.<sup>4</sup> Smith, Hattie<sup>4</sup> (Smith) Ralston, Leo<sup>5</sup> Smith, Pauline<sup>5</sup> (Smith) Bulger, Frank Andrews, Adah (Schafer) Smith. Middle row: Charles O. Bulger, Julia Catherine (McDowell) Smith, James L.<sup>4</sup> Smith Jr., Roxalee<sup>4</sup> (Smith) Andrews. Bottom row: Forrest Lee<sup>5</sup> Andrews, Catharine<sup>5</sup> Smith, Rosalee<sup>5</sup> Smith. The photo on the ground is of Edward House<sup>5</sup> Andrews, so about 1918, Houston.



Figure 32. John Milam<sup>4</sup> Smith and family

## ILLUSTRATIONS

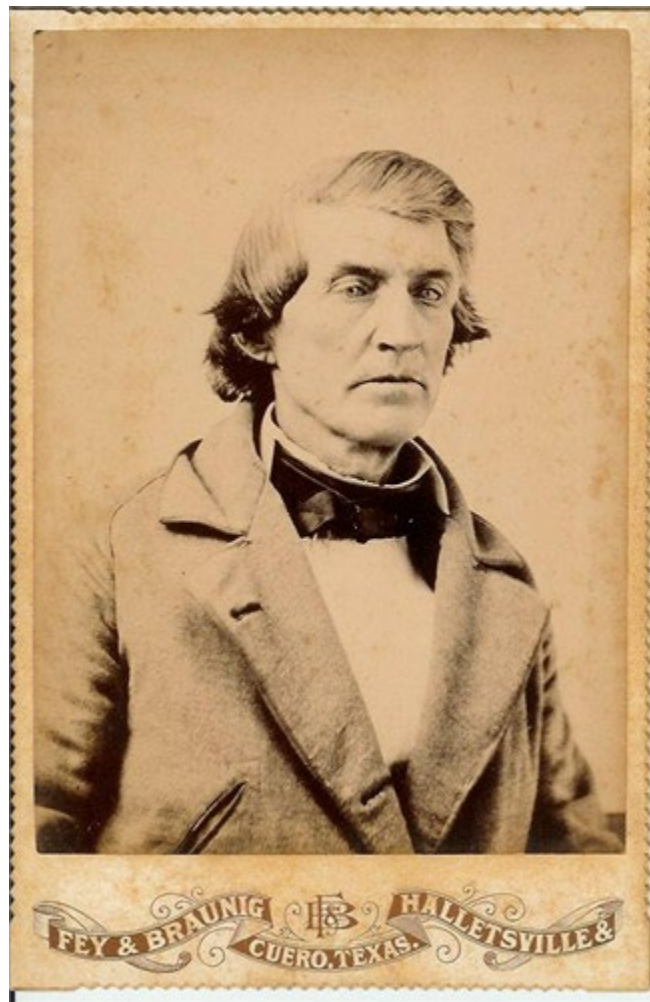


Figure 33. William Berry<sup>2</sup> Smith





Figure 34. Mary Ann (Ashmore) Smith, wife of William Berry<sup>2</sup>

## ILLUSTRATIONS

1837.  
Camp Bowie, Head Quarters Texas Army May 20.  
I do hereby certify that James Smith was  
enlisted in the Service of Texas on the 13<sup>th</sup> day of  
February 1836 and has served faithfully since that  
date to the present, making fifteen months and four  
days; five months and twenty four days of which [he?] has  
served as 2<sup>nd</sup> Sergt. of Comp A. 1<sup>st</sup> Reg. Regular  
Artillery. He is therefore entitled to draw pay from  
the Government at the rate of Ten dollars per month  
as a private, and twelve dols. per month as a Sergeant.  
Private Pay for 15 months \$150.00  
increase of \$4.00 as Sergt. Pr. M. 29.00  
Approved Due \$179.00  
J. Snively  
Acting Sec. of War.  
Given under my hand  
This 20<sup>th</sup> May 1837  
D. McFarland Capt. Co. A  
1<sup>st</sup> Reg. Art.

Figure 35. James<sup>2</sup> Smith's discharge affidavit of 20 May 1837

### Transcription

1837.

Camp Bowie, Head Quarters Texas Army May 20.

I do hereby certify that James Smith was enlisted in the service of Texas on the 13<sup>th</sup> day of February 1836 and has served faithfully since that date to the present, making fifteen months and four days, five months and twenty four days of which [he?] has served as 2<sup>nd</sup> Sergt. Of Comp A. 1<sup>st</sup> Reg. Regular Artillery. He is therefore entitled to draw pay from the Government at the rate of Ten dollars per month as a private, and twelve dols. per month as a Sergeant.

Private Pay for 15 months	\$150.00
increase of \$4.00 [sic] as Sergt. Pr. M.	29.00
Due	<u>\$179.00</u>

Given under my hand this 20<sup>th</sup> May 1837  
D. McFarland Capt. Co. A 1<sup>st</sup> Reg. Art.

Approved  
J. Snively  
Acting Sec. of War.

[N.B. The calculation for sergeant's pay is flawed. James should have received only \$2 additional per month ("Pr. M.") as sergeant, assuming the \$12 per month rate is correct as given. Five months and 24 days at \$2 would be an increase of only \$12 at most (for 6 months). Even

at \$4 per month the increase should have been \$24, not \$29.]



Figure 36. From left: William Forrest<sup>4</sup> Smith, Frankie Lu Ann<sup>6</sup> (Smith) Campbell, Joseph Henry<sup>5</sup> Smith, John David<sup>6</sup> Smith, Lula Lee (Anderson) Smith, Bessie (Zidek) Smith



## ILLUSTRATIONS

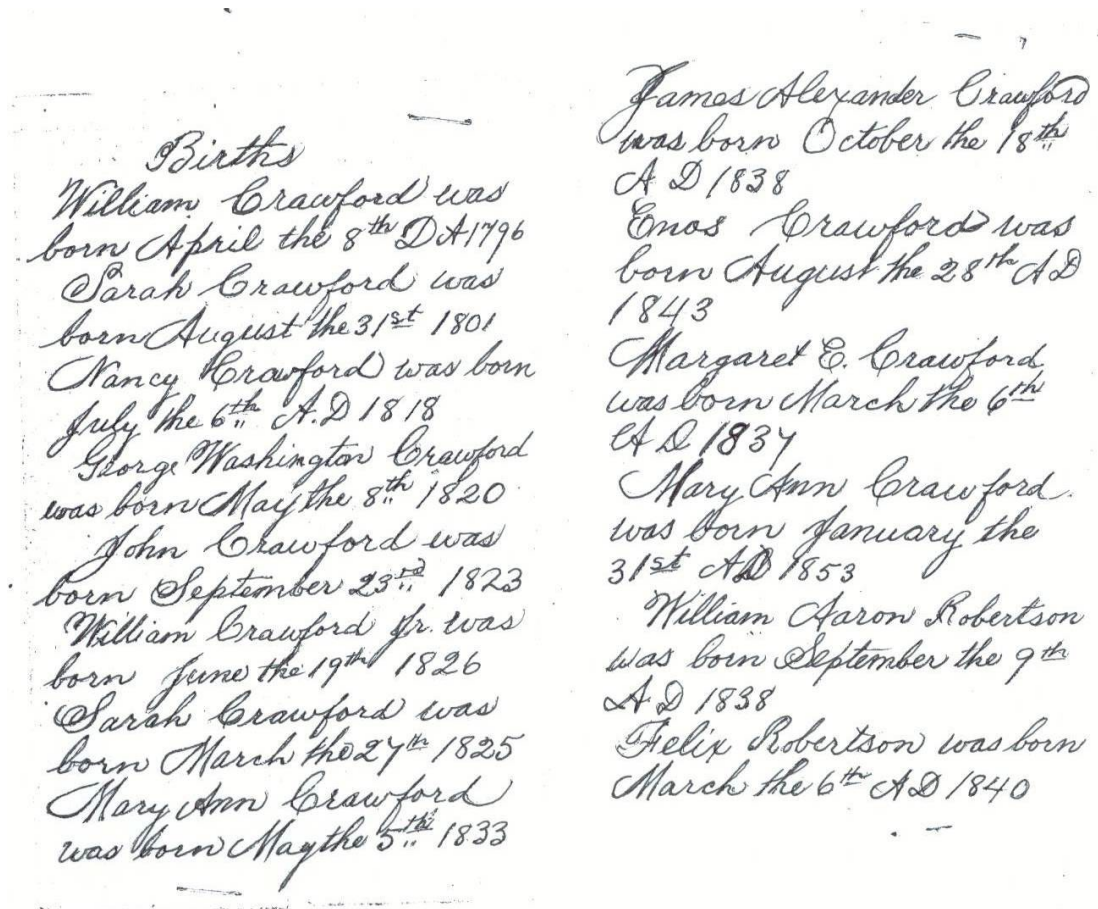


Figure 37. William Crawford Family Bible, p. 1 (see bibliography).

From Minnie Neal Cline's  
Bible Records. She copied them (xeroxed)  
and gave them to me when I visited her  
in her home over several visits in early 1980's.  
Clyde Cline

Uncle J. O.  
Crawford  
Died June  
7<sup>th</sup> 1930-  
Born 1850 in Tennessee

Riley was born March 19<sup>th</sup> 1879  
Eva Crawford was born  
Feb. the 7<sup>th</sup> AD 1875  
Riley D. Crawford was  
born March the 10<sup>th</sup> AD 1879  
Claudia Lapaal Remolde  
was born Sept. the 8<sup>th</sup> AD 1878  
Ellis Earnest Cline  
was born January the 2<sup>nd</sup> AD  
1802

William Smith  
was born April 19, 1850?  
written 1850? 1858  
1852

William Smith  
died April the 9<sup>th</sup> 1898

William Crawford was  
Born in Haywood Co.  
North Carolina

Sarah Smith was  
Born in Buncombe Co.  
North Carolina  
and Died August 21<sup>st</sup> 1878  
Wednesday morning  
2 O'clock and 40 Min

John Smith Died Apr 9/1882

Figure 38. William Crawford Family Bible, p. 2 (see bibliography).

## ILLUSTRATIONS



Figure 39. Elijah Franklin<sup>4</sup> Smith and his wife Fanny (Fannie).



Figure 40. The Elijah Franklin<sup>4</sup> Smith family.

Elijah Franklin<sup>4</sup> Smith (left) with Fanny, Arthur<sup>4</sup>, Della Mae<sup>4</sup>, Floyd<sup>4</sup>, Ora Lea<sup>4</sup>, and Frank<sup>4</sup> in the back row, and Ewell<sup>4</sup> (left) and Sam<sup>4</sup> in the front row.



# ILLUSTRATIONS

**Family Record**

**Grand Parents.**

Names.	Born.		Died.		
	When	Where	When	Where	
Father's Father <i>E. Lijah Frank Smith</i>		<i>Texas</i>			
Mother's Mother <i>Richard Morris</i>		<i>Georgia</i>	<i>1910</i>	<i>Texas</i>	
Mother's Mother <i>Josephine Elam M.</i>		<i>Georgia</i>	<i>1870</i>	<i>Georgia</i>	
<b>Parents.</b>					
Names.	Born.		Died.		
	When	Where	When	Where	
Father <i>E. F. Smith</i>	<i>3/24/62</i>	<i>Texas</i>	<i>10/9/28</i>	<i>Georgia</i>	
Mother <i>Fannie Smith</i>	<i>7/22/66</i>	<i>Georgia</i>	<i>3/6/53</i>	<i>Knox</i>	
<b>Children.</b>					
Names.	Born.		Married.		Died.
	When	Where	When	To Whom.	
1 <i>Car Smith</i>	<i>11/9/87</i>	<i>Coke</i>	<i>2/9/1908</i>	<i>Chris King</i>	<i>19</i>
2 <i>Arthur Smith</i>	<i>9/3/87</i>	<i>Rennels</i>	<i>1918</i>		
3 <i>Della Smith</i>	<i>3/24/93</i>	<i>Williamson</i>	<i>1919</i>	<i>J. C. Button</i>	
4 <i>Frank Smith</i>	<i>10/3/96</i>	<i>Jack Co.</i>	<i>1915</i>		
5 <i>W. J. Smith</i>	<i>9/24/98</i>	<i>Jack</i>	<i>1898</i>		
6 <i>Baby Smith</i>	<i>1/24/100</i>	<i>Jack</i>			
7 <i>Sammy Smith</i>	<i>3/18/02</i>	<i>Jack</i>	<i>1926</i>	<i>Artie Slater</i>	
8 <i>E. W. Smith</i>	<i>7/15/04</i>	<i>Young</i>	<i>1928</i>	<i>Sweetie Henson</i>	
9					
10					
11					
12					

Figure 41. The Elijah Franklin<sup>4</sup> Smith Family Bible record.

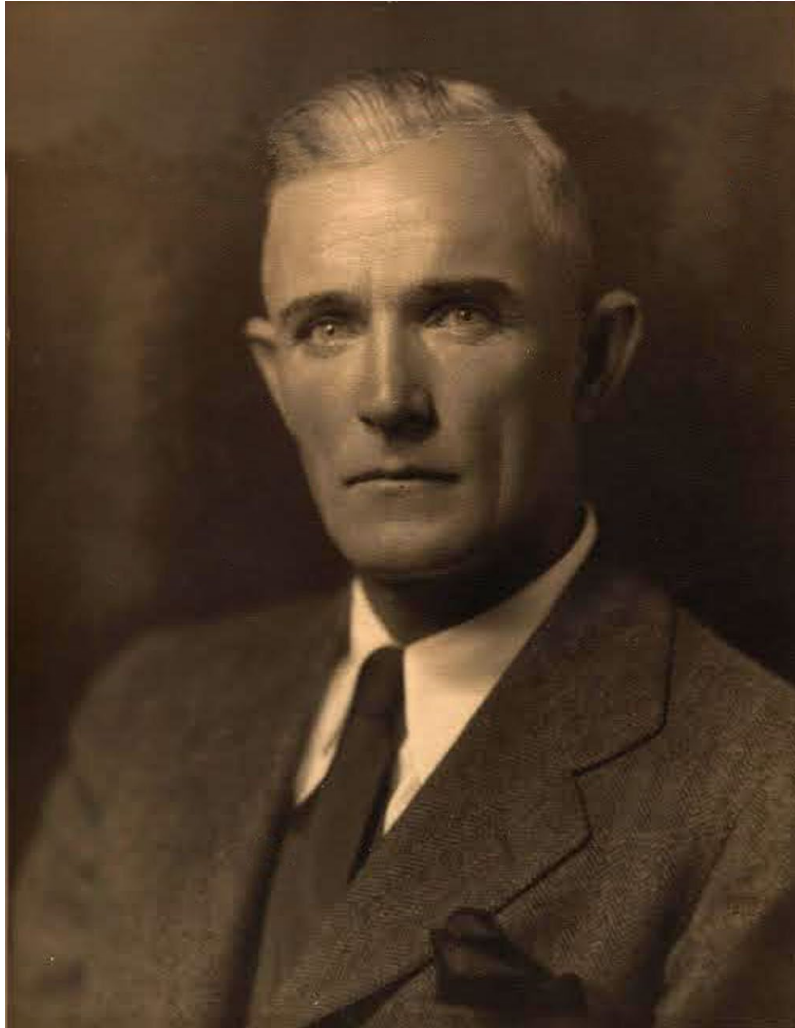


Figure 42. Arthur Alton<sup>5</sup> Smith, president of C&H Sugar

## ILLUSTRATIONS

### 1836 Tax Districts Hawkins County, Tennessee

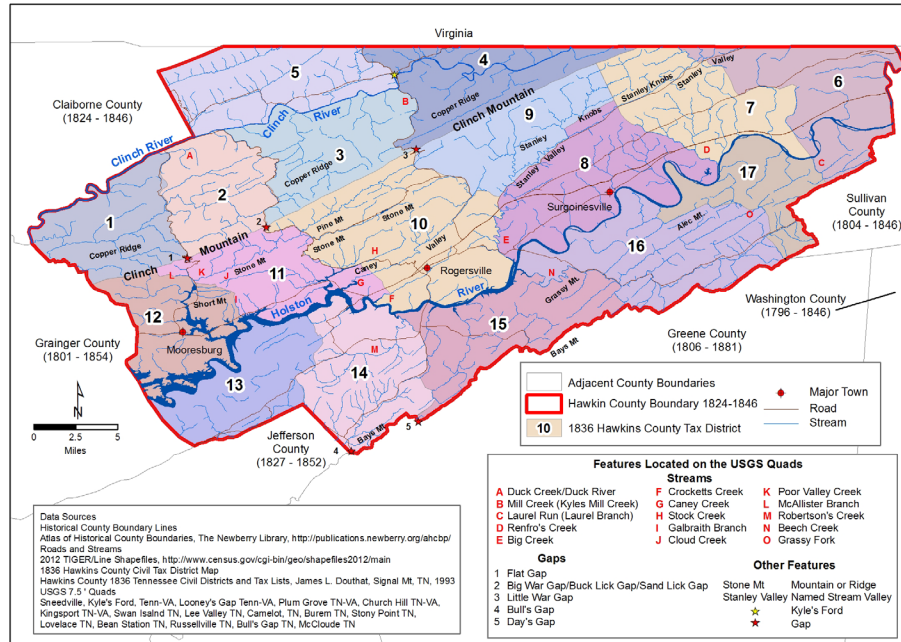


Figure 43. Map of Hawkins County, Tenn., 1836



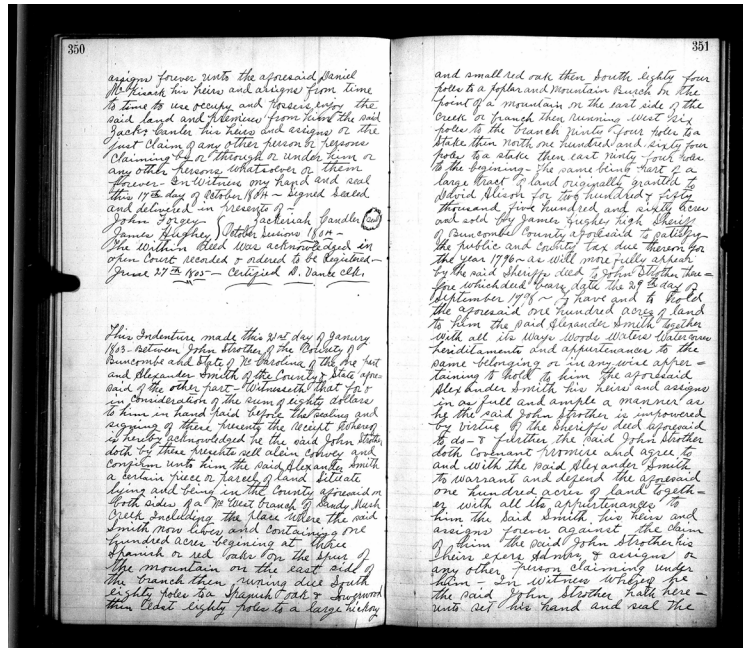


Figure 44. Buncombe Co. deed, Alexander Smith, 21 Jan. 1803

## ILLUSTRATIONS

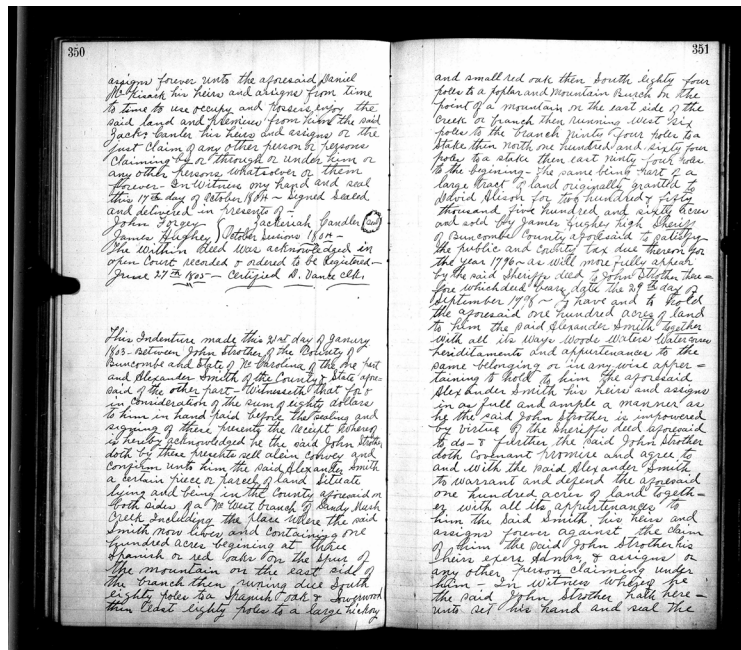


Figure 45. Buncombe Co. deed, Alexander Smith, 3 July 1810

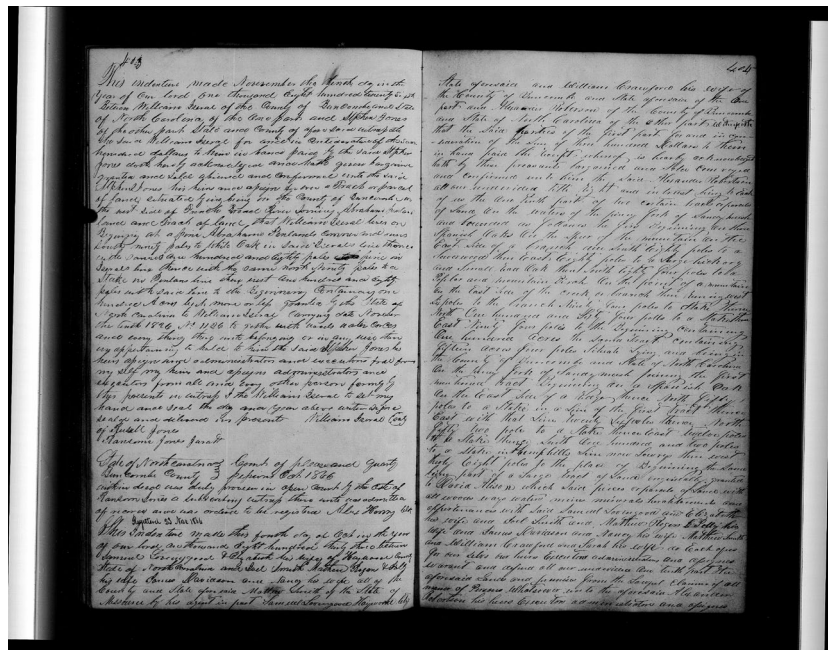


Figure 46. Buncombe Co., N.C., deed, Smith heirs to Robertson, 4 Oct. 1833

# ILLUSTRATIONS

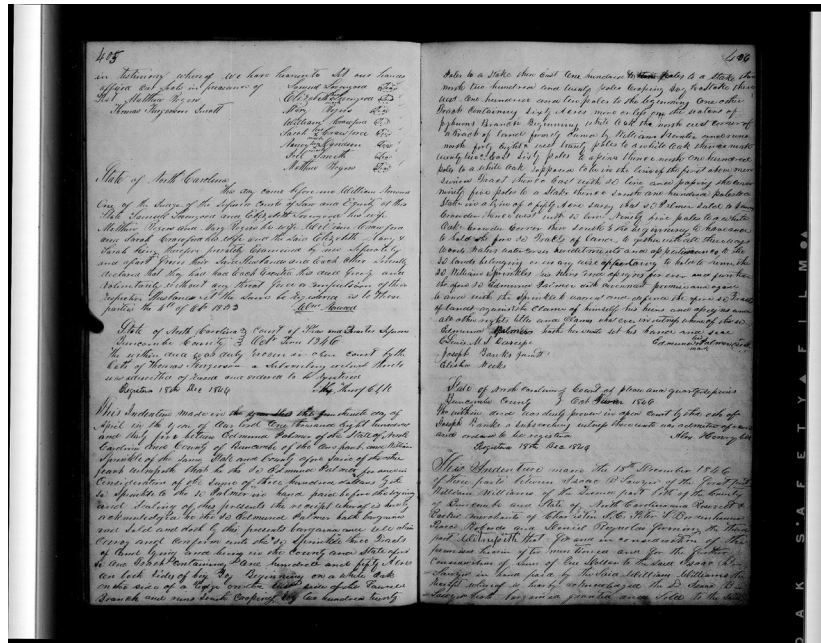


Figure 47. Signature page, Buncombe Co., N.C., deed of Smith heirs, 4 Oct. 1833

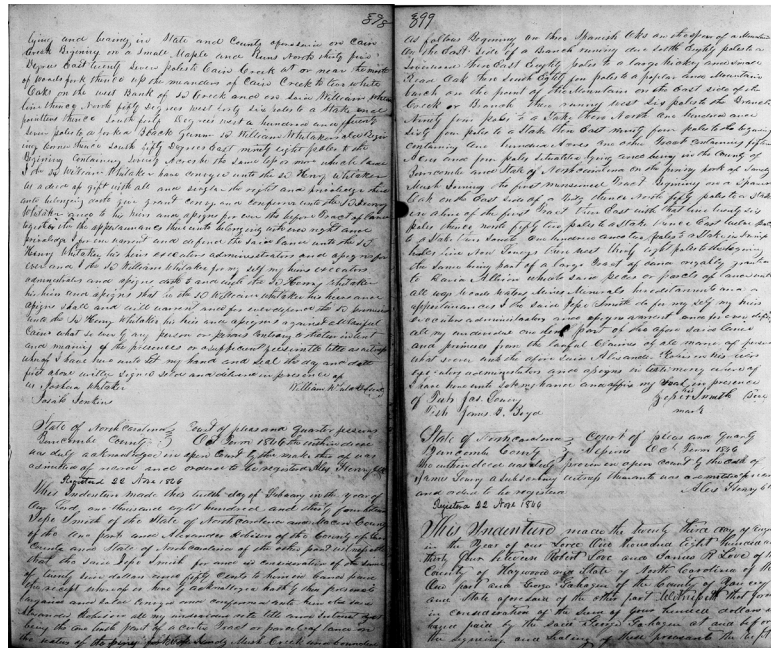


Figure 48. Buncombe Co., N.C., deed, Jesse Smith (heir) to Robison, 12 Feb. 1834

# ILLUSTRATIONS

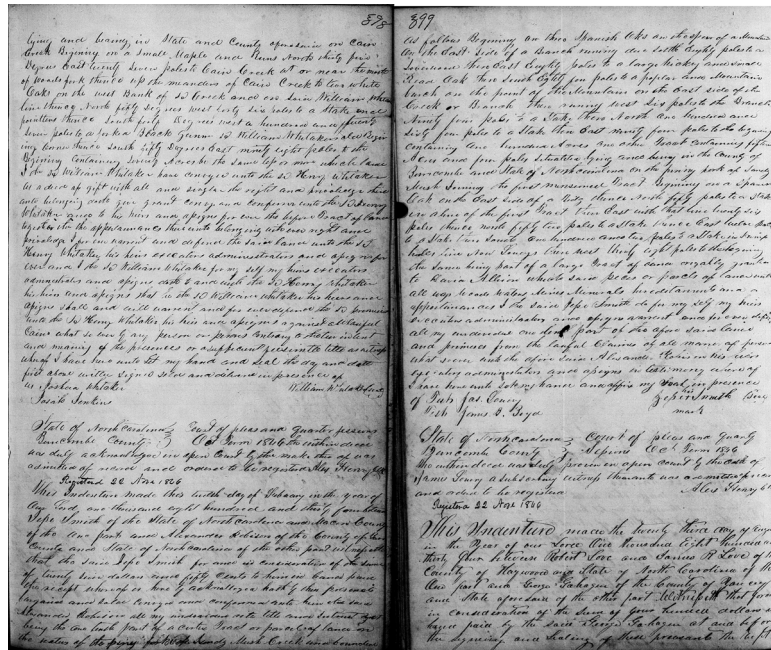


Figure 49. Buncombe Co., N.C., deed, Nancy (Smith) Brown (heir) to Robeson, 16 Mar. 1844

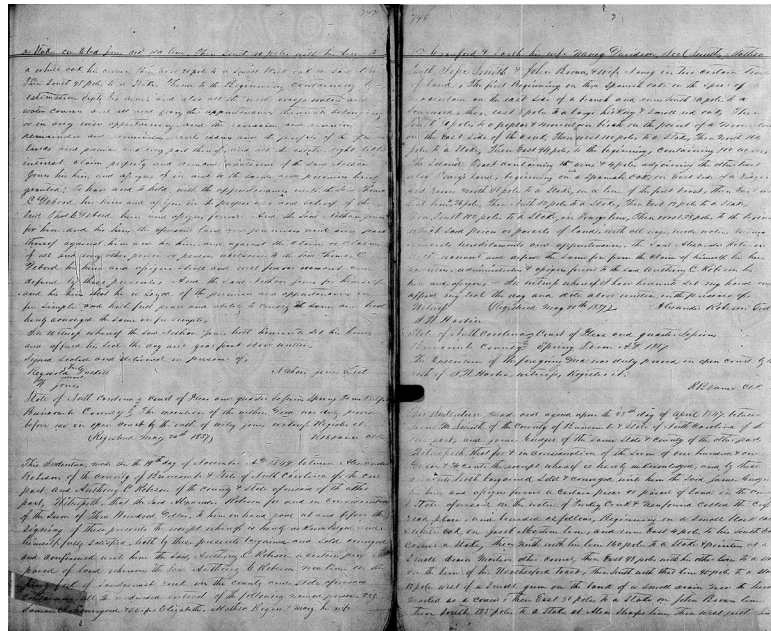


Figure 50. Buncombe Co., N.C., deed, Robeson to Robeson, 19 Nov. 1849



# ILLUSTRATIONS

Testimony of Elizabeth Lovinggood,  
 wife of deceased claimant, Samuel Loving-  
 good, taken under oath, at her home,  
 nine miles from Ackworth, Cherokee Co.,  
 Ga. Aug. 28<sup>th</sup>, 1877.

Q Please repeat this oath:

A I, Elizabeth Lovinggood, do solemnly  
 swear that I will tell the truth, the  
 whole truth, and nothing but the truth,  
 in regard to all matters whereof  
 I may be questioned. So help me God.

Q What relation are you to Samuel Lovinggood  
 who filed this claim?

A I am his widow. He died the 6<sup>th</sup> day of Feb.  
 1875. He left no will. He left eight living  
 children. The children dead left no heirs.  
 Matilda Ferguson is the oldest. I don't think  
 I can tell her age without looking at  
 the Bible. She was born June 28, 1818. I  
 don't think her husband was in the Confed-  
 erate army. She has grown children.  
 I don't know whether any of them  
 were in the army. They live in Hay-  
 worth Co., N.C.

Q The next?

A Anne Bradshaw. She was born May 20  
 1820. I don't know whether her husband

Figure 51. p. 3 of testimony of Elizabeth<sup>2</sup> (Smith) Lovinggood, 28 Aug. 1877

Q Anna Bradshaw. She was born May 20 1820. I don't know whether her husband or children were in the army. They live in Hayward Co. N.C.

Q The next?

Q Jesse Lovingsgood. He was born July 11<sup>th</sup> 1822. He lives in Sumner Co. Georgia

He was not in the army. I don't know how he kept out. I believe he was in the iron works a part of the time. I don't know whether the works were run in the interest of the Confederacy.

Q The next?

Q George W. Lovingsgood. He was born Aug 5<sup>th</sup> 1826. He was not in the army. I think he kept out because of affliction in his head and breast. He lived in Sumner Co. He now lives in half a mile of me ~~now~~.

Q The next?

Q Eli Lovingsgood was born Nov. 11<sup>th</sup> 1828. He was not in the army. He had lost his hearing. I don't think he furnished a substitute. I don't think any of my sons did.

Q The next?

Q Lucinda Jones was born July 6<sup>th</sup> 1838. She has been married about 22 years. She lives in Lumpkin Co. Her husband was not in the army. I don't know how

*son dead ~1854*

Figure 52. p. 4 of testimony of Elizabeth<sup>2</sup> (Smith) Lovinggood, 28 Aug. 1877

## ILLUSTRATIONS



Figure 53. Gravestone of Samuel, husband of Elizabeth<sup>2</sup> (Smith) Lovinggood

Names of Cynthia J. Fords	
Uncle + half Brothers & Sisters	
William Wilson Smith Whole	James ( )
Francis Smith Doct. Whole married J.H. Ford	
Carrie Smith Edmond Half	
Ruby McGaha 1880 Half	
Ada McGaha 8/1888 " "	
Larson McGaha 8-23-1888 " "	
Joan Smith 10-11-85 New Smy.	
Gae Smith " " "	
Martin Smith " " "	
Riley Smith " " "	
Tammy Smith " " "	
Linda Smith " " "	
King Smith " " "	
Charley Smith (Charles) B. 7-1895 NC	
A.G. Smith " " "	
L.G. Smith 13, 1904 " "	
Louise Smith " " "	
Nancy Smith " " "	
Ricky Bell Smith " " "	
Ricky Smith " " "	
James C. Henderson John " " "	
La Grange Bay " " "	
Willie (Smith) Sutton 1900	

Figure 54. Siblings and half siblings of Cynthia J. (Smith) Ford

# ILLUSTRATIONS

{ Certificate.  
No. 2819

249

## The United States of America.

To all to whom these presents shall come, Greeting:

*Whereas James Smith of Pickens County*  
has deposited in the General Land Office of the United States, a certificate of the Register of the Land Office at New Kalosoa State of Alabama  
whereby it appears that full payment has been made by the said *James Smith*  
according to the provisions of the Act of Congress of the 24th of April, 1820, entitled "An act making further provision for the sale of the Public Lands," for  
the West half of the North East quarter, of section seventeen, in Township twenty of Range Section West in the Dist  
District of New Kalosoa and State of Alabama containing Eighty acres and forty seven hundredths of an acre  
according to the official plat of the survey of the said lands, returned to the General Land Office by the Surveyor General, which said tract has been pur-  
chased by the said *James Smith*

**NOW KNOW YE**, That the **UNITED STATES OF AMERICA**, in consideration of the premises, and in conformity with the several  
acts of Congress, in such case made and provided, have Given and Granted, and, by these presents do give and grant, unto the said *James Smith* and to  
his heirs the said tract above described: To Have and to Hold the same, together with all the rights, privileges, immunities, and appur-  
tenances, of whatsoever nature, thereto belonging, unto the said *James Smith*  
and his heirs and assigns forever.

In testimony whereof, *J. James Monroe*

PRESIDENT OF THE UNITED STATES OF AMERICA, have caused these letters to be made Patent, and the seal of the General Land Office is to hereunto  
affixed.

Given under my hand, at the City of Washington, the *twelfth* day of *May* in the year of our  
Lord, one thousand eight hundred and twenty *four* and of the Independence of the United States the  
*forty eighth*.

By the President, *J. M.*  
*J. F.*

Commissioner of the General Land Office.

Figure 55. James M.<sup>2</sup> Smith, of Pickens Co., Ala., parcel, 1824



Figure 56. Map of Cocke Co., Tenn.