

EDWARDIAN RIGGSES OF AMERICA II:  
ILLUSTRATIONS FOR  
ELDER BETHUEL RIGGS (1757–1835):  
GENERATIONS FIVE THROUGH TEN  
OF HIS FAMILY TO 2006

*by*  
*Alvy Ray Smith, FASG*

**This is a hyperlinked text file.**  
**It looks like a book but acts like a website:**

A child with a + sign is linked to its respective sketch.  
The person atop a sketch is linked to its respective child line.  
The top line of the title page is linked to the table of contents.  
Each line in the table of contents is linked to its sketch.  
Each line in the table of illustrations is linked to its picture.  
Each note superscript is linked to its note.  
The cursor changes to a pointing finger above a link. Then click.

Copyright ©2008–2018 by Alvy Ray Smith

All rights reserved. No part of this publication may be reproduced or transmitted in any form or by any means, electronic or mechanical, including photocopying, recording, or any information storage or retrieval system, without permission in writing from the copyright holder, except for the inclusion of brief quotations in a review.



Electronically published by  
ARS LONGA  
publications imprint of  
Alvy Ray Smith, PhD, FASG  
Berkeley CA  
<alvyray.com>

**Bibliographic Reference:**

Alvy Ray Smith, FASG. *Edwardian Riggses of America II: Elder Bethuel Riggs (1757–1835): Generations Five Through Ten of His Family to 2006*. Berkeley: Ars Longa, 2018. Please also cite the version number from the title page.

This is volume 2 of the Edwardian Riggs series.

# TABLE OF CONTENTS

TABLE OF ILLUSTRATIONS ..... iv  
PICTURE CREDITS..... vii  
ILLUSTRATIONS ..... I

## TABLE OF ILLUSTRATIONS

Figure 1. Montral Goble <sup>5</sup> and Charlotte (Hatch) Shaw gravestone.....	I
Figure 2. Movie poster for film produced by Douglas Fairbanks and Jay Theodore <sup>5</sup> Reed .....	II
Figure 3. Lee, Earl <sup>6</sup> , and Sarah <sup>5</sup> (Turnbull) McMahan.....	III
Figure 4. Charles and Mary <sup>5</sup> (Creech) Walton with, from left, Louis <sup>6</sup> , Richard (possibly Rhoda) <sup>6</sup> , and Ira <sup>6</sup> .....	IV
Figure 5. Susie <sup>5</sup> (Turnbull) with husbands, Thomas and Lawrence Caldwell....	V
Figure 6. Cecil <sup>5</sup> or Jesse <sup>5</sup> Turnbull as a laundry “chaffeur” .....	VI
Figure 7. Newton Clifford <sup>6</sup> Turnbull.....	VII
Figure 8. Ada <sup>5</sup> (Price) and David Devore with Daisy <sup>6</sup> in back, and from the left, Alfred <sup>6</sup> , Jennie <sup>6</sup> , David <sup>6</sup> , and Robert <sup>6</sup> .....	VIII
Figure 9. James Robert <sup>5</sup> Gililland, accused [and acquitted] of the infamous murder in 1896 of Col. Albert J. Fountain and his son, Henry. ....	IX
Figure 10. James Robert <sup>5</sup> Gililland, distinguished ranchman of New Mexico...	X
Figure 11. Gravestone of James R. <sup>5</sup> and Adella May (Gould) Gililland, Tularosa, New Mexico .....	XI
Figure 12. Lucretia <sup>5</sup> (Gililland) and Benjamin Smith, 1904, with five of their children, from the left, Richard <sup>6</sup> , Ray <sup>6</sup> , Grace <sup>6</sup> , Jim <sup>6</sup> , and Rose <sup>6</sup> .....	XII
Figure 13. Lucretia Ann <sup>5</sup> Gililland's gravestone, with incorrect birth.....	XII
Figure 14. George Edward <sup>5</sup> Gililland gravestone in Alamogordo, New Mexico.....	XIII
Figure 15. Sim, Ethel <sup>6</sup> , and Jessie <sup>5</sup> (Gililland) Hournbuckle in front, and Charlie <sup>6</sup> , Esther <sup>6</sup> , and Lewis <sup>6</sup> behind .....	XIV
Figure 16. Willie Grace <sup>5</sup> (Gililland) Meyer, with Grace <sup>6</sup> [left] and Bill <sup>6</sup> Meyer, about 1904 .....	XV
Figure 17. Ginevra (Wood), Alice <sup>6</sup> , Sam <sup>6</sup> , and Dick <sup>5</sup> Gililland .....	XVI
Figure 18. Bert <sup>5</sup> (Riggs) and Fate Fariss wedding picture .....	XVII
Figure 19. 50th anniversary of Lafayette and Alberta <sup>5</sup> (Riggs) Fariss [front center].....	XVIII
Figure 20. Homer <sup>5</sup> Riggs with Liston <sup>6</sup> , Hal <sup>6</sup> , and Mary Helen <sup>6</sup> .....	XIX
Figure 21. 50th anniversary of Nancy Pearl <sup>5</sup> (Riggs) and Curtis Carl Parker [center].....	XX
Figure 22. Gravestone of Robert L. <sup>5</sup> and Ruby L. Millsbaugh.....	XXI



## TABLE OF ILLUSTRATIONS

Figure 23. Charles Edwin <sup>5</sup> and Michael Steven <sup>6</sup> Webb .....	XXI
Figure 24. Frank <sup>5</sup> , Cynthia, and Roy <sup>6</sup> Riggs .....	XXII
Figure 25. Harry <sup>5</sup> Riggs, standing, and his boat on the Mississippi River ....	XXIII
Figure 26. Bess <sup>5</sup> (Riggs) and Lloyd Wells .....	XXIV
Figure 27. Orrel J. <sup>6</sup> , left, and Donald Emory <sup>6</sup> Wells .....	XXV
Figure 28. Herbert “Bert” <sup>5</sup> Riggs .....	XXV
Figure 29. Warren <sup>5</sup> and Mary Campbell, and their family .....	XXVI
Figure 30. John, Cleman <sup>6</sup> , and Ulah <sup>5</sup> (Campbell) Cole .....	XXVII
Figure 31. John Blake <sup>6</sup> Cole, 1945 .....	XXVIII
Figure 32. Peter William <sup>5</sup> Riggs, known as “Pete” .....	XXIX
Figure 33. Larry Dean <sup>5</sup> Riggs .....	XXX
Figure 34. Paul Ray <sup>5</sup> Boren .....	XXXI
Figure 35. Paul Ray <sup>5</sup> Boren family, with Paul <sup>5</sup> , Venola, and Paulette <sup>6</sup> in front from the left, and Kelly <sup>6</sup> , Murray <sup>6</sup> , and Lee <sup>6</sup> in back from the left. ....	XXXII
Figure 36. Lois Florence <sup>5</sup> Shaw .....	XXXIII
Figure 37. Thomas and Susan Yates with daughters, including Martha Mae Turnbull, second from right .....	XXXIII
Figure 38. From left, Charlie <sup>7</sup> , [Steve?] <sup>8</sup> , Don <sup>7</sup> , and [Don <sup>8</sup> Jr.?] Strube ....	XXXIV
Figure 39. Earl D. <sup>6</sup> McMahan holding sheet music of his song, <i>Baby Say That You'll Be Mine</i> , with unidentified musicians .....	XXXIV
Figure 40. Merrill <sup>7</sup> , Charles <sup>7</sup> , and Lorene <sup>7</sup> Walton .....	XXXV
Figure 41. Rhoda <sup>6</sup> (Walton) Berry, left, and Ruth <sup>6</sup> Walton, 1913 .....	XXXVI
Figure 42. Wilson <sup>6</sup> McCoy, comic strip artist of <i>The Phantom</i> .....	XXXVII
Figure 43. Wilson <sup>6</sup> McCoy's final Phantom artwork, 1961 .....	XXXVII
Figure 44. <i>The Phantom</i> , drawn by Wilson <sup>6</sup> McCoy .....	XXXVII
Figure 45. Lora Lucille <sup>6</sup> (Caldwell) and Harley Miller West wedding ....	XXXVIII
Figure 46. Ray <sup>6</sup> and Maudie (McKindrey) Smith, wedding 1914 .....	XXXIX
Figure 47. Ray <sup>6</sup> Smith (center) with his children, left to right: Alvy <sup>7</sup> , Lucy <sup>7</sup> , Margaret <sup>7</sup> , and Lawrence <sup>7</sup> .....	XL
Figure 48. Richard <sup>6</sup> L. Raley gravestone, Tularosa, New Mexico .....	XL
Figure 49. Seated from left: Clay and Alice <sup>6</sup> (Gililland) Smith, Richard <sup>7</sup> Smith; standing from left: Viola <sup>7</sup> (Smith) Hobbs, Dorothy <sup>7</sup> (Smith) Hess, and Lucy <sup>7</sup> (Smith) Sauerman .....	XLI
Figure 50. Riggs H. <sup>6</sup> Fariss .....	XLII

## TABLE OF ILLUSTRATIONS

Figure 51. Aubrey <sup>6</sup> Fariss .....	XLIII
Figure 52. Autograph of Aubrey <sup>6</sup> Fariss, from his will 16 October 1992.....	XLIII
Figure 53. Ruby and Sam <sup>6</sup> Fariss with Pat <sup>7</sup> [above] and Jeff <sup>7</sup> [below].....	XLIV
Figure 54. Helen Bess <sup>6</sup> Fariss as a young girl .....	XLV
Figure 55. Autograph of Helen Bess <sup>6</sup> (Fariss) Foster, from her will 5 May 1999.....	XLV
Figure 56. Theda and John William <sup>6</sup> Parker .....	XLVI
Figure 57. Esther <sup>6</sup> Riggs, about 1930 .....	XLVII
Figure 58. Barbara Ruth <sup>7</sup> (Cole) Adams .....	XLVIII
Figure 59. Kathy <sup>8</sup> (Steitz) Rieth .....	XLVIII
Figure 60. Portrait of Kenneth Milton <sup>7</sup> Birkhead at the Truman Library....	XLIX
Figure 61. Margaret <sup>7</sup> (Smith) Coleman.....	L
Figure 62. Alvy R. <sup>7</sup> and Edith (Sanders) Smith, the author's parents.....	LI
Figure 63. Lucy Mae <sup>7</sup> (Smith) and George Gray.....	LII
Figure 64. Patricia Anne <sup>7</sup> (Fariss) and Carl Thomas Bond, with children, from left, Barbara <sup>8</sup> , Brenda <sup>8</sup> , and Bryan <sup>8</sup> .....	LIII
Figure 65. From left, Tracy <sup>8</sup> , Lori <sup>8</sup> , Claire (Modenbach), and Jeff <sup>7</sup> Fariss .....	LIII
Figure 66. Book by Rob <sup>7</sup> Riggs.....	LIV
Figure 67. Dr. Dan <sup>7</sup> Wiginton, Cincinnati Children's Hospital Medical Center.....	LV
Figure 68. Rev. Lance <sup>7</sup> Carrithers .....	LVI
Figure 69. From left, Cassi <sup>9</sup> , Gary <sup>8</sup> , and Patti <sup>9</sup> Coleman.....	LVII
Figure 70. Alvy Ray <sup>8</sup> and Zu (Horwitz) Smith, with President Bill Clinton .....	LVIII
Figure 71. Rita Louise <sup>8</sup> Smith, before marriages. ....	LIX
Figure 72. Edith and Alvy R. <sup>7</sup> Smith with their daughter's family, from the left, Todd <sup>9</sup> , Doug, Joy <sup>9</sup> , the graduate, and Lynn <sup>8</sup> (Smith) Lockwood .....	LX
Figure 73. From left, Rick and Brenda <sup>8</sup> (Bond), Dana <sup>9</sup> [top], Lindsay <sup>9</sup> , and Matthew <sup>9</sup> Hazel.....	LX
Figure 74. Males, from left: Scott <sup>9</sup> , Thomas, and Seth <sup>9</sup> Thomas; females, from left: Barbara <sup>8</sup> (Bond), Polly <sup>9</sup> , and Phoebe <sup>9</sup> Thomas.....	LXI
Figure 75. Lori <sup>8</sup> (Fariss) and Ted Pennison, wedding 1990 .....	LXII
Figure 76. Clockwise from top, Brian, Tracy <sup>8</sup> (Fariss), Connor <sup>9</sup> , and Allison <sup>9</sup> Passantino .....	LXIII
Figure 77. Randy <sup>8</sup> Riggs, City Councilman, Waco, McLennan Co., Tex. ...	LXIV

## PICTURE CREDITS

1. From the collection of Jennifer Denise<sup>8</sup> (John) Bumann.
2. [Movie poster credit here].
3. From the collection of Kent<sup>7</sup> McMahan.
4. From the collection of Katherine<sup>8</sup> (Walton) Philpot. Photograph mount is labeled "R. W. Pennelle, Troy, Mo."
5. From the collection of Paul<sup>7</sup> Caldwell.
6. From the collection of Paul<sup>7</sup> Caldwell.
7. From the collection of June Groshong. A handtinted photograph behind curved glass, approximately 17 inches tall before cropping.
8. From the collection of Andrew Devore<sup>8</sup> Boyd.
9. Jim Gililand, Herman Weisner Papers, Ms249, G/1/11a, Archives and Special Collections Department, New Mexico State University Library, Las Cruces, New Mexico.
10. From Leon C. Metz, *Pat Garrett: The Story of a Western Lawman* (Norman, Oklahoma: University of Oklahoma Press, 1974), 187, "courtesy R. L. Madison." [Permission not yet obtained.]
11. From the collection of Alvy Ray<sup>8</sup> Smith (the author).
12. From the collection of Alvy R.<sup>7</sup> Smith (author's father).
13. From the collection of Alvy Ray<sup>8</sup> Smith (the author).
14. From the collection of Alvy Ray<sup>8</sup> Smith (the author).
15. From the collection of Viola<sup>7</sup> (Smith) Hobbs. The original is printed on a card with "Williams Gallery Safford, Ariz." printed at bottom and a superimposed "J," "R," and "W" also printed there. A handwritten "S. L. H. Hournbuckle & family" also appears there.
16. From the collection of Viola<sup>7</sup> (Smith) Hobbs.
17. From the collection of Viola<sup>7</sup> (Smith) Hobbs.
18. From the collection of Jeffrey Bert<sup>7</sup> Fariss.
19. From the collection of Patricia Anne<sup>7</sup> (Fariss) Bond.
20. From the collection of Bill Griffin.
21. From the collection of Jeffrey Bert<sup>7</sup> Fariss.
22. From the collection of Dr. Dean Rising.

## PICTURE CREDITS

23. From the collection of Michael S.<sup>6</sup> Webb, online at <[www.webblawpage.com/charles\\_webb.htm](http://www.webblawpage.com/charles_webb.htm)>.
24. From the collection of Bernice<sup>7</sup> (Johnson) North.
25. From the collection of Raymond Barton.
26. From the collection of Bernice<sup>7</sup> (Johnson) North.
27. From the collection of Raymond Barton.
28. From the collection of Bernice<sup>7</sup> (Johnson) North.
29. From the collection of Barbara Ruth<sup>7</sup> (Cole) Adams.
30. From the collection of Barbara Ruth<sup>7</sup> (Cole) Adams.
31. From the collection of Barbara Ruth<sup>7</sup> (Cole) Adams.
32. From the collection of Larry Dean<sup>5</sup> Riggs.
33. From the collection of Larry Dean<sup>5</sup> Riggs.
34. From Paul H. Kelly and Lin H. Johnson, *Latter-day Saints Experience World War II*, <[www.seasonofwar.com/forum.htm](http://www.seasonofwar.com/forum.htm)> (accessed 22 Feb. 2005) [permission not yet obtained].
35. From the collection of Venola (Eddington) Boren.
36. From the collection of Jennifer Denise<sup>8</sup> (John) Bumann.
37. From *Families of Lincoln County, Missouri, Family of Thomas Samuel Yates*, <[www.rootsweb.com/~molincol/album/ph-yates-thos-s-fam.htm](http://www.rootsweb.com/~molincol/album/ph-yates-thos-s-fam.htm)> (accessed 23 Sept. 2004), has photo captioned, "Susan Ariminta (Dixon) Yates & Thomas Samuel Yates with daughters (standing, left to right) Doris Broyles/Stephens, Macey Ida Rodgers, Helen Missouri Van Sickle, Martha Mae Turnbull and Cora Lavy" [permission not yet obtained].
38. From <[www.cwpaint.com/history.asp](http://www.cwpaint.com/history.asp)> (accessed 15 Jan. 2005) [permission not yet obtained].
39. From the collection of Kent<sup>7</sup> McMahan. Reverse of photo is stamped with "Eidson Studio, 1014½ Capitol Avenue, Fairfax 3500 Houston, Tex." "Photo Eidson" is inked on the front, lower left corner [cropped here].
40. From the collection of Katherine<sup>8</sup> (Walton) Philpot.
41. From the collection of Katherine<sup>8</sup> (Walton) Philpot. Photographs taken 16 Feb. 1913.
42. [Wilson McCoy credit; The Phantom credit.]
43. [Wilson McCoy credit; The Phantom credit.]
44. [Wilson McCoy credit; The Phantom credit.]
45. From the collection of Judy<sup>8</sup> (West) Moyer.

## PICTURE CREDITS

50. From the collection of Jeffrey Bert<sup>7</sup> Fariss. “Giddings Copy” stamped on face of photo [cropped here].
51. From the collection of Jeffrey Bert<sup>7</sup> Fariss. “Giddings ©” stamped in gold on face of photo.
52. Will, Aubrey Fariss, Harris Co., Tex., 16 Oct. 1992. Digital scan courtesy of Jeffrey Bert<sup>7</sup> Fariss.
53. From the collection of Jeffrey Bert<sup>7</sup> Fariss.
54. From the collection of Jeffrey Bert<sup>7</sup> Fariss.
55. Will, Helen Bess Fariss Foster, Harris Co., Tex., 5 May 1999. Digital scan courtesy of Jeffrey Bert<sup>7</sup> Fariss.
56. From the collection of Jeffrey Bert<sup>7</sup> Fariss.
57. From the collection of Bernice<sup>7</sup> (Johnson) North.
58. From the collection of Barbara Ruth<sup>7</sup> (Cole) Adams.
59. From the collection of Kathy<sup>8</sup> (Steitz) Rieth.
60. Courtesy of the Truman Presidential Museum & Library, Truman Library Photographs, Portrait of Kenneth Birkhead, 67-643, not dated, photographer unknown. [Permission not yet obtained.]
61. From my collection.
62. From my collection.
63. From my collection.
64. From the collection of Patricia Anne<sup>7</sup> (Fariss) Bond.
65. From the collection of Jeffrey Bert<sup>7</sup> Fariss.
66. Cover of Rob<sup>7</sup> Riggs, *In the Big Thicket: On the Trail of the Wild Man*.
67. From the collection of Dan<sup>7</sup> Wiginton.
68. From *Meet Rev. Lance Carrithers*, <[www.firstchurchdc.com/Our\\_Church/-Carrithers/carrithers.html](http://www.firstchurchdc.com/Our_Church/-Carrithers/carrithers.html)> (accessed 14 Mar. 2005) [permission not yet granted].
69. From my collection.
70. From my collection.
71. From my collection.
72. From my collection.
73. From the collection of Patricia Anne<sup>7</sup> (Fariss) Bond.
74. From the collection of Patricia Anne<sup>7</sup> (Fariss) Bond.
75. From the collection of Jeffrey Bert<sup>7</sup> Fariss.

## PICTURE CREDITS

- 76. From the collection of Jeffrey Bert<sup>7</sup> Fariss.
- 77. From the Waco, McLennan Co., Tex. official website, <[www.waco-texas.com/leadership/district3.htm](http://www.waco-texas.com/leadership/district3.htm)>.

## ILLUSTRATIONS



Figure 1. Montral Goble<sup>5</sup> and Charlotte (Hatch) Shaw gravestone

## ILLUSTRATIONS



Figure 2. Movie poster for film produced by Douglas Fairbanks and Jay Theodore<sup>5</sup> Reed



## ILLUSTRATIONS



Figure 3. Lee, Earl<sup>6</sup>, and Sarah<sup>5</sup> (Turnbull) McMahan

## ILLUSTRATIONS



Figure 4. Charles and Mary<sup>5</sup> (Creech) Walton with, from left, Louis<sup>6</sup>, Richard (possibly Rhoda)<sup>6</sup>, and Ira<sup>6</sup>

## ILLUSTRATIONS

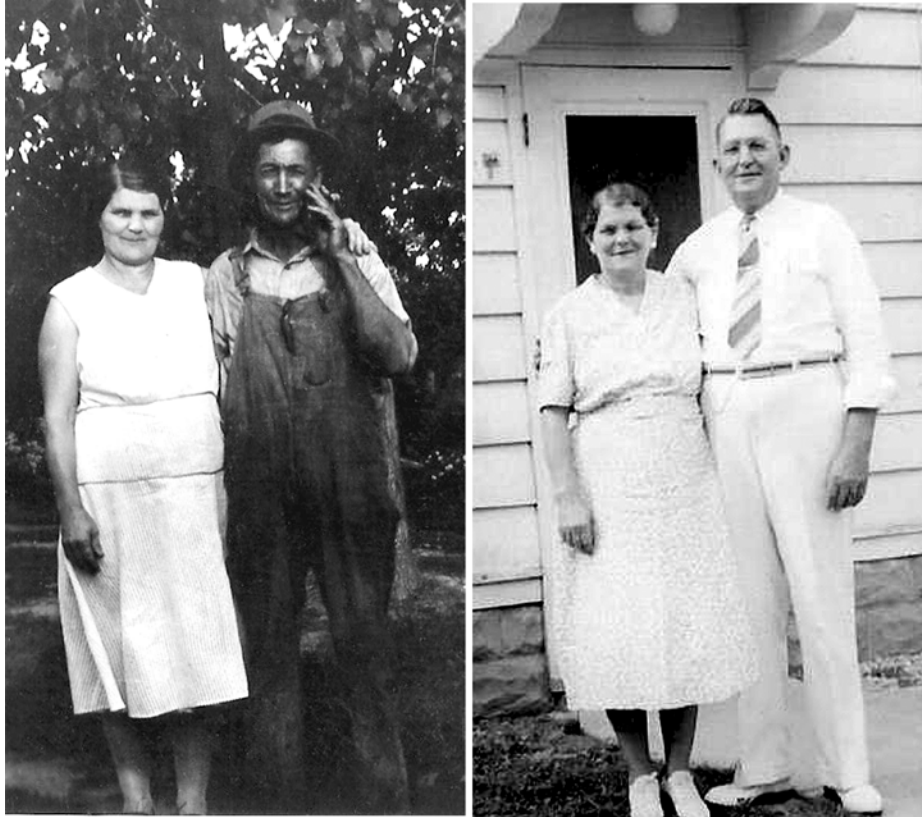


Figure 5. Susie<sup>5</sup> (Turnbull) with husbands, Thomas and Lawrence Caldwell

## ILLUSTRATIONS



Figure 6. Cecil<sup>5</sup> or Jesse<sup>5</sup> Turnbull as a laundry “chaffeur”

## ILLUSTRATIONS



Figure 7. Newton Clifford<sup>6</sup> Turnbull

## ILLUSTRATIONS



Figure 8. Ada<sup>5</sup> (Price) and David Devore with Daisy<sup>6</sup> in back, and from the left, Alfred<sup>6</sup>, Jennie<sup>6</sup>, David<sup>6</sup>, and Robert<sup>6</sup>

## ILLUSTRATIONS



Figure 9. James Robert<sup>5</sup> Gililand, accused [and acquitted] of the infamous murder in 1896 of Col. Albert J. Fountain and his son, Henry.

## ILLUSTRATIONS

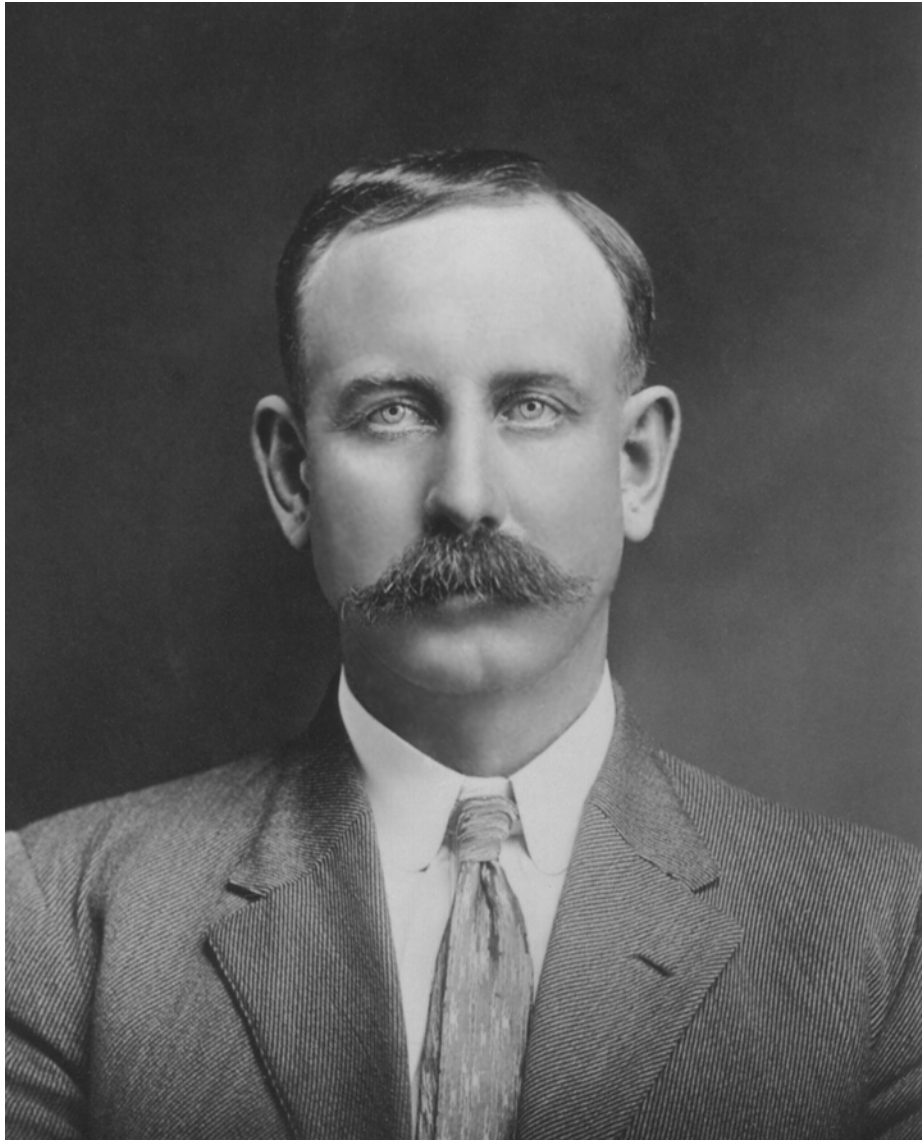


Figure 10. James Robert<sup>5</sup> Gililand, distinguished ranchman of New Mexico



## ILLUSTRATIONS



Figure 11. Gravestone of James R.<sup>5</sup> and Adella May (Gould) Gililand, Tularosa, New Mexico

## ILLUSTRATIONS



Figure 12. Lucretia<sup>5</sup> (Gililand) and Benjamin Smith, 1904, with five of their children, from the left, Richard<sup>6</sup>, Ray<sup>6</sup>, Grace<sup>6</sup>, Jim<sup>6</sup>, and Rose<sup>6</sup>



Figure 13. Lucretia Ann<sup>5</sup> Gililand's gravestone, with incorrect birth



## ILLUSTRATIONS



Figure 14. George Edward<sup>5</sup> Gililand gravestone in Alamogordo, New Mexico

## ILLUSTRATIONS



Figure 15. Sim, Ethel<sup>6</sup>, and Jessie<sup>5</sup> (Gililand) Hournbuckle in front, and Charlie<sup>6</sup>, Esther<sup>6</sup>, and Lewis<sup>6</sup> behind

## ILLUSTRATIONS



Figure 16. Willie Grace<sup>5</sup> (Gililand) Meyer, with Grace<sup>6</sup> [left] and Bill<sup>6</sup> Meyer, about 1904

## ILLUSTRATIONS



Figure 17. Ginevra (Wood), Alice<sup>6</sup>, Sam<sup>6</sup>, and Dick<sup>5</sup> Gililand

## ILLUSTRATIONS



Figure 18. Bert<sup>5</sup> (Riggs) and Fate Fariss wedding picture

## ILLUSTRATIONS



Figure 19. 50th anniversary of Lafayette and Alberta<sup>5</sup> (Riggs) Fariss [front center]

Back row, left to right: Helen Bess<sup>6</sup> (Fariss) Foster, Thomas Bell Foster, Elsie (Rain) Fariss, Aubrey<sup>6</sup> Fariss, Ruby Imogene (Lewis) Fariss, Samuel L.<sup>6</sup> Fariss, Betty (Parr) Fariss, Riggs<sup>6</sup> Fariss. Front row, from left: Patricia<sup>7</sup> (Fariss) Bond, Lafayette Fariss, Alberta<sup>5</sup> (Riggs) Fariss, Jeffrey Bert<sup>7</sup> Fariss.<sup>[1]</sup>

---

1. Email from Barb<sup>8</sup> Thomas and Pat<sup>7</sup> Bond, 7 Aug. 2004, via Shelley Holmes Caroe.



## ILLUSTRATIONS



Figure 20. Homer<sup>5</sup> Riggs with Liston<sup>6</sup>, Hal<sup>6</sup>, and Mary Helen<sup>6</sup>

## ILLUSTRATIONS



Figure 21. 50th anniversary of Nancy Pearl<sup>5</sup> (Riggs) and Curtis Carl Parker [center]

Description by Becca<sup>6</sup> Lewis: "1966 L. to R.: Linoel Lewis - Husband of Becca Lewis; Cindy Lou Lewis - Daughter of Linoel & Becca Lewis; Mary Rebecca Lewis - Wife of Linoel Lewis & Daughter of Pearl & Curt Parker; Randall Linoel Lewis - Son of Linoel & Becca Lewis (He took off his Party Clothes before the party was over); Nancy Pearl Riggs Parker - Wife of Curt Parker, Daughter of Nannie & Edward B Riggs; John William Parker Jr. - Son of J. W. & Theda Parker; Curtis Carl Parker - Husband of Pearl Riggs Parker; Curtis Edward Parker - Son of Curt & Pearl Parker; Barry Edward Parker - Son of Edward & Corinne Parker; Pamela Joe Parker Sherrill - daughter of Edward & Corinne Parker; Donna Rhea Parker Hill - daughter of J. W. & Theda Parker; Corinne Ingram Parker - Wife of Edward Parker - Mother of Barry & Pam Parker. The picture was taken on Pearl & Curt's 50<sup>th</sup> Wedding Anniv."<sup>[2]</sup>

---

2. Becca<sup>6</sup> Lewis, caption to the photograph of the 50th wedding anniversary of Nancy Pearl<sup>5</sup> (Riggs) and Curtis Carl Parker [henceforth cited as Becca<sup>6</sup> Lewis, 50th wedding anniversary caption], provided courtesy Jeff<sup>7</sup> Fariss as a digitized photograph of Becca's handwritten notes. The colon and semicolons are added by the author for ease of reading.

## ILLUSTRATIONS

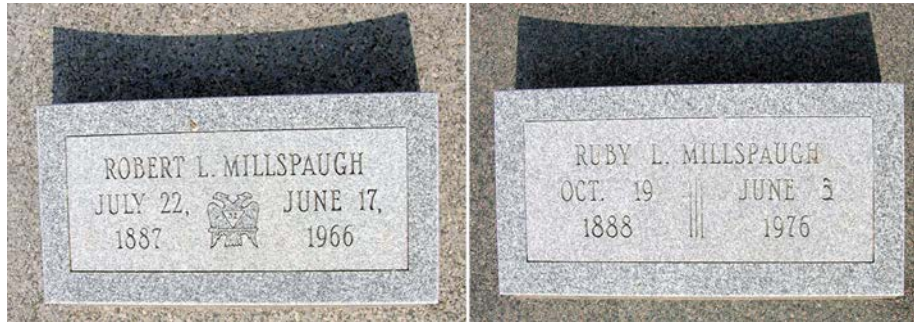


Figure 22. Gravestone of Robert L.<sup>5</sup> and Ruby L. Millspaugh



Figure 23. Charles Edwin<sup>5</sup> and Michael Steven<sup>6</sup> Webb

## ILLUSTRATIONS



Figure 24. Frank<sup>5</sup>, Cynthia, and Roy<sup>6</sup> Riggs

## ILLUSTRATIONS



Figure 25. Harry<sup>5</sup> Riggs, standing, and his boat on the Mississippi River

ILLUSTRATIONS



Figure 26. Bess<sup>5</sup> (Riggs) and Lloyd Wells

## ILLUSTRATIONS

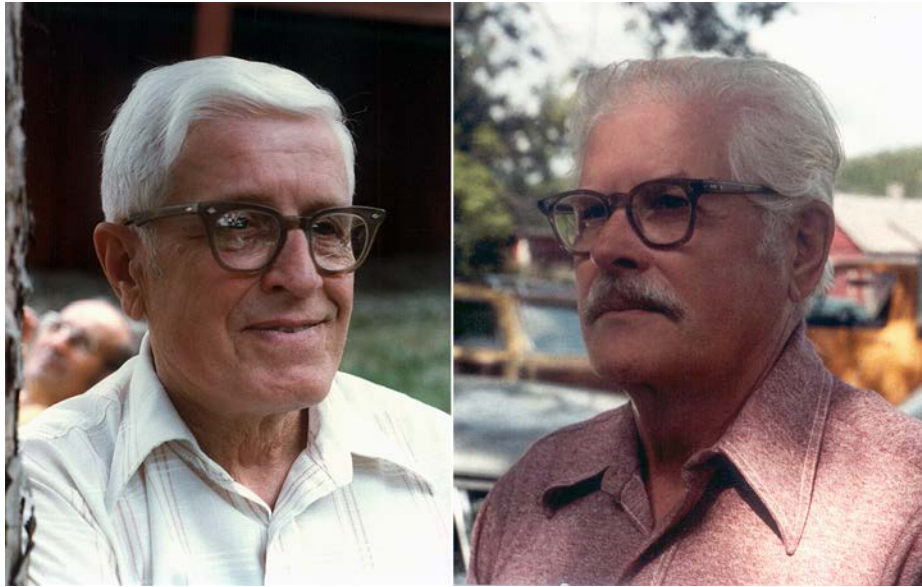


Figure 27. Orrel J.<sup>6</sup>, left, and Donald Emory<sup>6</sup> Wells



Figure 28. Herbert “Bert”<sup>5</sup> Riggs

## ILLUSTRATIONS



Figure 29. Warren<sup>5</sup> and Mary Campbell, and their family

Front row from left: Warren<sup>6</sup>, Warren<sup>5</sup>, and Mary Campbell, and Ethel<sup>6</sup> (Campbell) Tacket. Back row from left: Leo<sup>6</sup> and Leland<sup>6</sup> Campbell, and twins, Virginia<sup>6</sup> (Campbell) (Mervin) Van Wagoner and Veatrice<sup>6</sup> (Campbell) Mathewson.



## ILLUSTRATIONS



Figure 30. John, Cleman<sup>6</sup>, and Ulah<sup>5</sup> (Campbell) Cole

## ILLUSTRATIONS

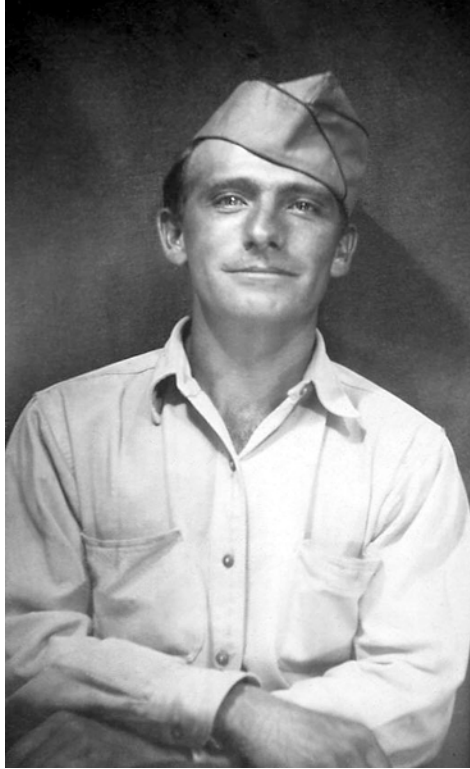


Figure 31. John Blake<sup>6</sup> Cole, 1945

## ILLUSTRATIONS

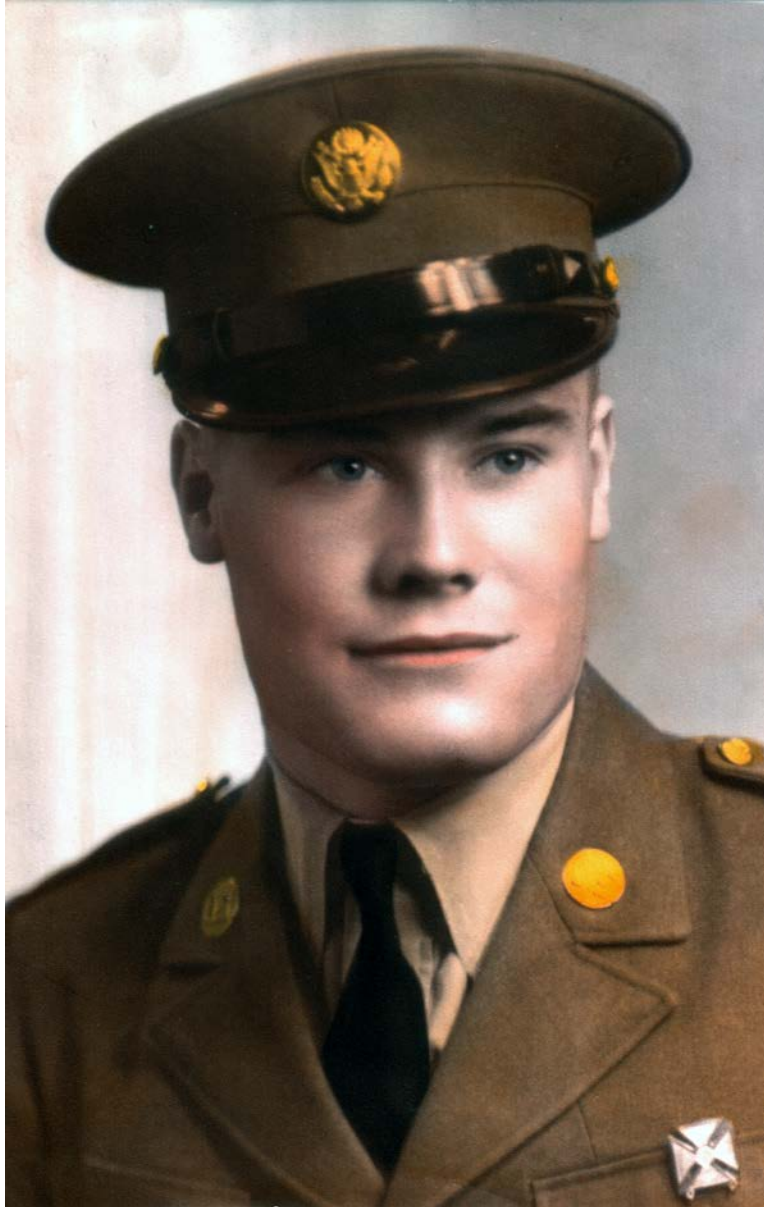


Figure 32. Peter William<sup>5</sup> Riggs, known as “Pete”

## ILLUSTRATIONS



Figure 33. Larry Dean<sup>5</sup> Riggs

## ILLUSTRATIONS



Figure 34. Paul Ray<sup>5</sup> Boren

## ILLUSTRATIONS



Figure 35. Paul Ray<sup>5</sup> Boren family, with Paul<sup>5</sup>, Venola, and Paulette<sup>6</sup> in front from the left, and Kelly<sup>6</sup>, Murray<sup>6</sup>, and Lee<sup>6</sup> in back from the left.

## ILLUSTRATIONS



Figure 36. Lois Florence<sup>5</sup> Shaw



Figure 37. Thomas and Susan Yates with daughters, including Martha Mae Turnbull, second from right

## ILLUSTRATIONS



Figure 38. From left, Charlie<sup>7</sup>, [Steve?]<sup>8</sup>, Don<sup>7</sup>, and [Don<sup>8</sup> Jr.] Strube



Figure 39. Earl D.<sup>6</sup> McMahan holding sheet music of his song, *Baby Say That You'll Be Mine*, with unidentified musicians



## ILLUSTRATIONS



Figure 40. Merrill<sup>7</sup>, Charles<sup>7</sup>, and Lorene<sup>7</sup> Walton

## ILLUSTRATIONS



Figure 41. Rhoda<sup>6</sup> (Walton) Berry, left, and Ruth<sup>6</sup> Walton, 1913

## ILLUSTRATIONS



Figure 42. Wilson<sup>6</sup> McCoy, comic strip artist of *The Phantom*

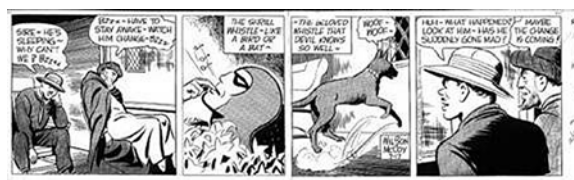


Figure 43. Wilson<sup>6</sup> McCoy's final Phantom artwork, 1961

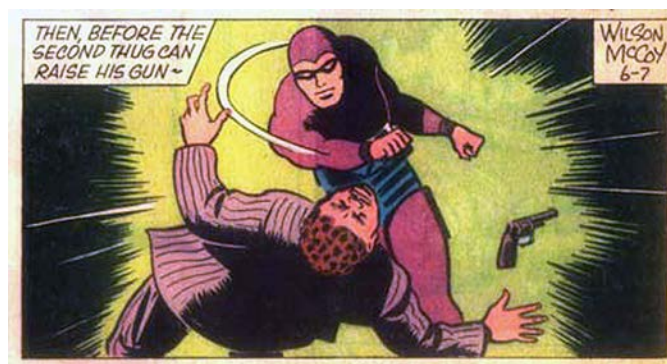


Figure 44. *The Phantom*, drawn by Wilson<sup>6</sup> McCoy

## ILLUSTRATIONS



Figure 45. Lora Lucille<sup>6</sup> (Caldwell) and Harley Miller West wedding

## ILLUSTRATIONS



Figure 46. Ray<sup>6</sup> and Maudie (McKindrey) Smith, wedding 1914

## ILLUSTRATIONS



Figure 47. Ray<sup>6</sup> Smith (center) with his children, left to right: Alvy<sup>7</sup>, Lucy<sup>7</sup>, Margaret<sup>7</sup>, and Lawrence<sup>7</sup>

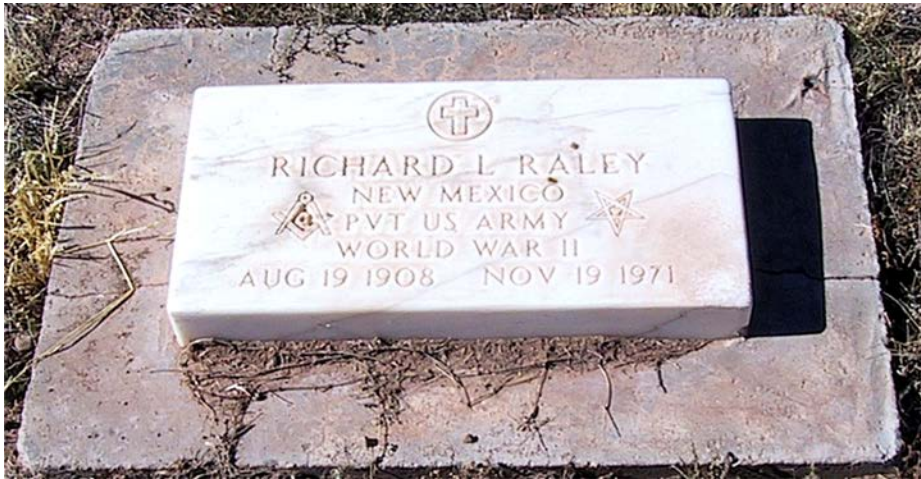


Figure 48. Richard<sup>6</sup> L. Raley gravestone, Tularosa, New Mexico



## ILLUSTRATIONS



Figure 49. Seated from left: Clay and Alice<sup>6</sup> (Gililand) Smith, Richard<sup>7</sup> Smith; standing from left: Viola<sup>7</sup> (Smith) Hobbs, Dorothy<sup>7</sup> (Smith) Hess, and Lucy<sup>7</sup> (Smith) Sauerman

## ILLUSTRATIONS

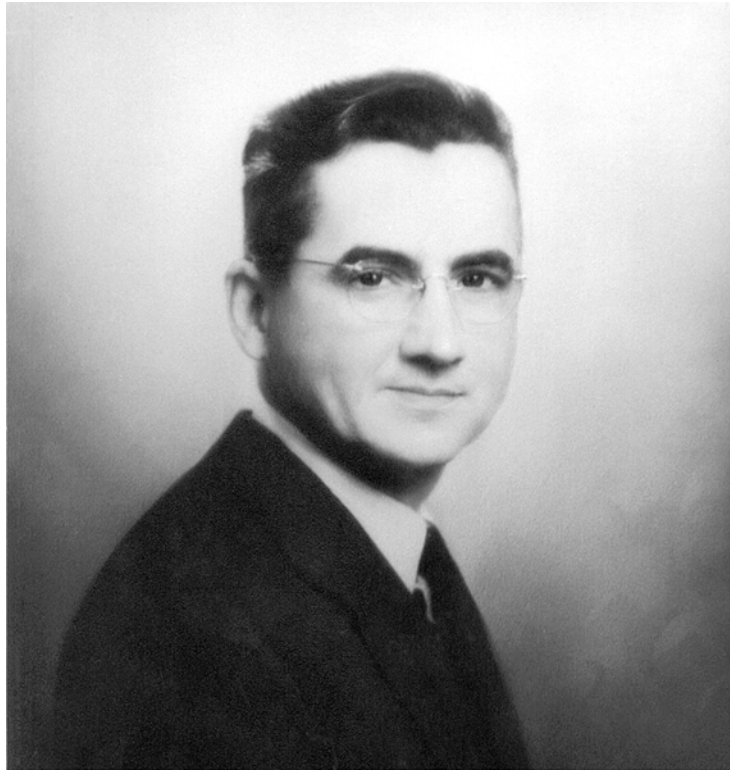


Figure 50. Riggs H.<sup>6</sup> Fariss



## ILLUSTRATIONS



Figure 51. Aubrey<sup>6</sup> Fariss

Aubrey Fariss  
Testator

Figure 52. Autograph of Aubrey<sup>6</sup> Fariss, from his will 16 October 1992

## ILLUSTRATIONS

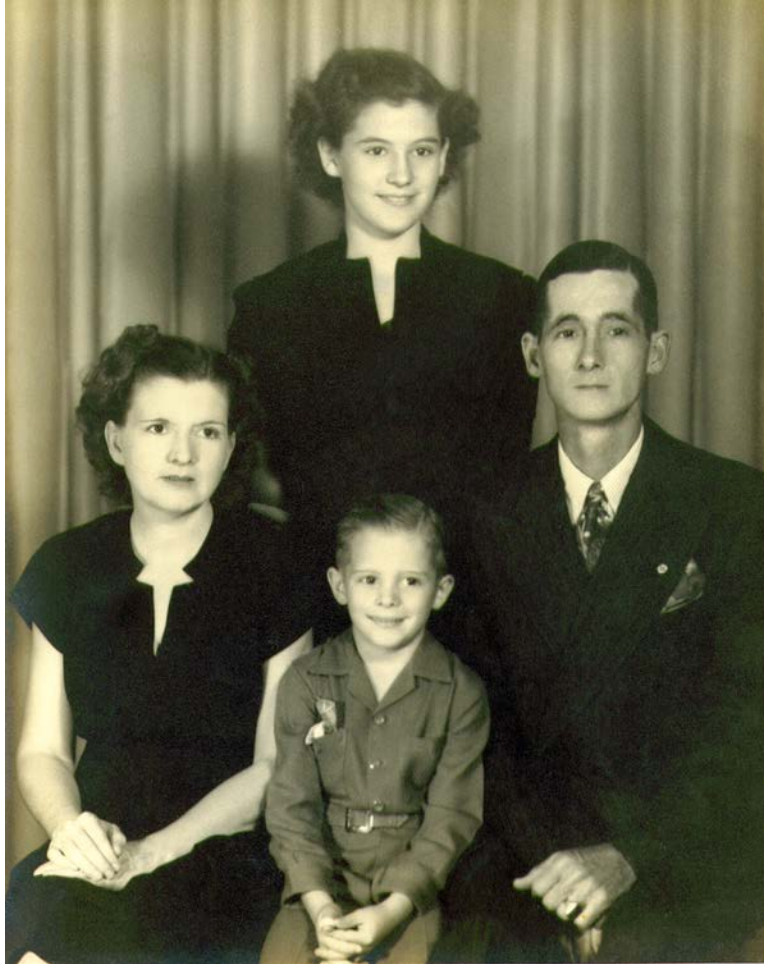


Figure 53. Ruby and Sam<sup>6</sup> Fariss with Pat<sup>7</sup> [above] and Jeff<sup>7</sup> [below]

## ILLUSTRATIONS



Figure 54. Helen Bess<sup>6</sup> Fariss as a young girl

*Helen Bess Fariss Foster*  
**Helen Bess Fariss Foster**

Figure 55. Autograph of Helen Bess<sup>6</sup> (Fariss) Foster, from her will 5 May 1999

## ILLUSTRATIONS



Figure 56. Theda and John William<sup>6</sup> Parker

## ILLUSTRATIONS



Figure 57. Esther<sup>6</sup> Riggs, about 1930

## ILLUSTRATIONS



Figure 58. Barbara Ruth<sup>7</sup> (Cole) Adams



Figure 59. Kathy<sup>8</sup> (Steitz) Rieth

## ILLUSTRATIONS



Figure 60. Portrait of Kenneth Milton<sup>7</sup> Birkhead at the Truman Library



## ILLUSTRATIONS



Figure 61. Margaret<sup>7</sup> (Smith) Coleman



## ILLUSTRATIONS



Figure 62. Alvy R.<sup>7</sup> and Edith (Sanders) Smith, the author's parents

## ILLUSTRATIONS

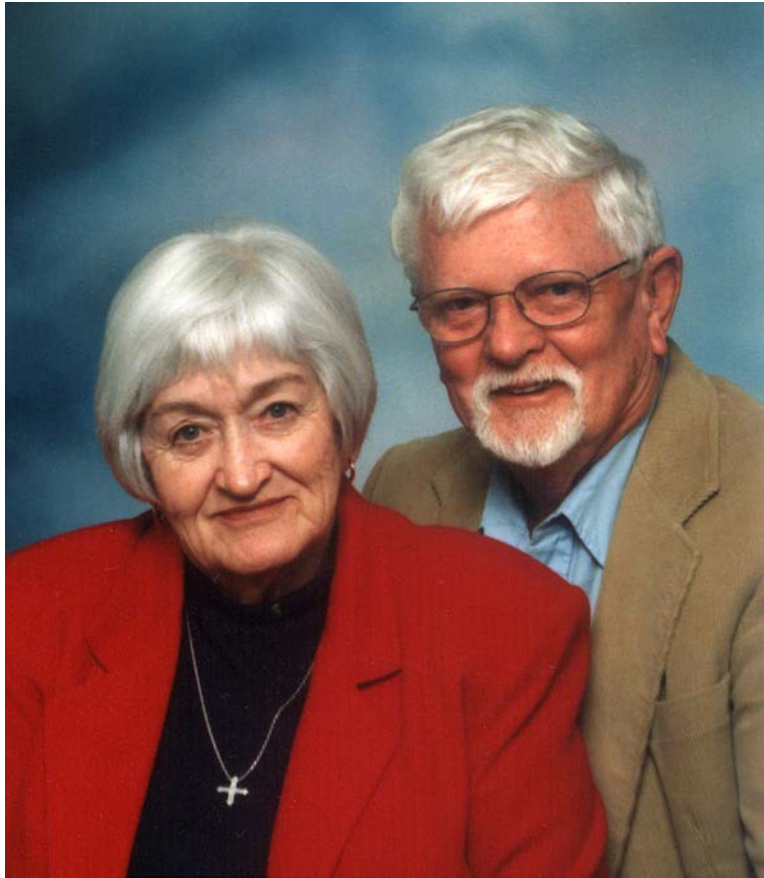


Figure 63. Lucy Mae<sup>7</sup> (Smith) and George Gray

## ILLUSTRATIONS



Figure 64. Patricia Anne<sup>7</sup> (Fariss) and Carl Thomas Bond, with children, from left, Barbara<sup>8</sup>, Brenda<sup>8</sup>, and Bryan<sup>8</sup>



Figure 65. From left, Tracy<sup>8</sup>, Lori<sup>8</sup>, Claire (Modenbach), and Jeff<sup>7</sup> Fariss

## ILLUSTRATIONS



Figure 66. Book by Rob<sup>7</sup> Riggs

## ILLUSTRATIONS



Figure 67. Dr. Dan<sup>7</sup> Wiginton, Cincinnati Children's Hospital Medical Center

## ILLUSTRATIONS



Figure 68. Rev. Lance<sup>7</sup> Carrithers



## ILLUSTRATIONS

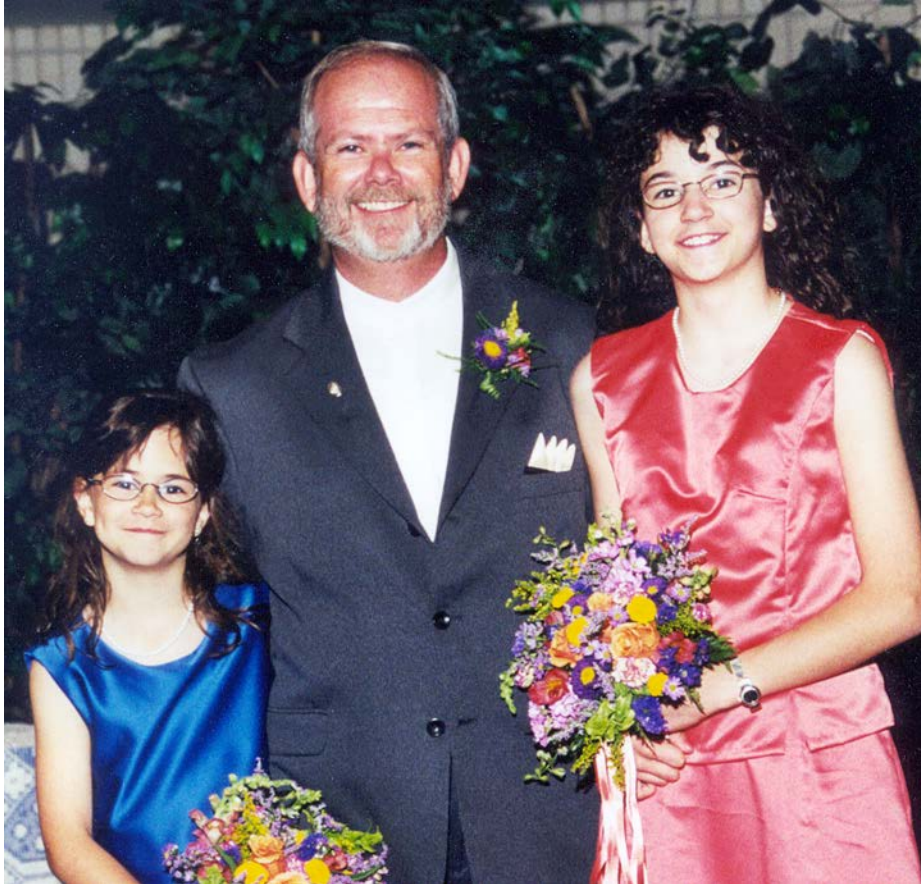


Figure 69. From left, Cassi<sup>9</sup>, Gary<sup>8</sup>, and Patti<sup>9</sup> Coleman

## ILLUSTRATIONS



Figure 70. Alvy Ray<sup>8</sup> and Zu (Horwitz) Smith, with President Bill Clinton



## ILLUSTRATIONS



Figure 71. Rita Louise<sup>8</sup> Smith, before marriages.

## ILLUSTRATIONS



Figure 72. Edith and Alvy R.<sup>7</sup> Smith with their daughter's family, from the left, Todd<sup>9</sup>, Doug, Joy<sup>9</sup>, the graduate, and Lynn<sup>8</sup> (Smith) Lockwood

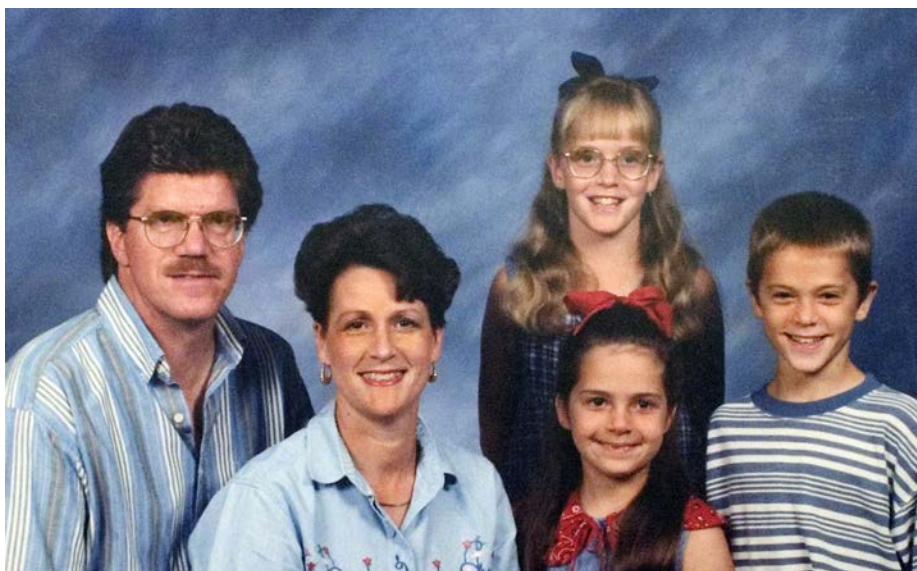


Figure 73. From left, Rick and Brenda<sup>8</sup> (Bond), Dana<sup>9</sup> [top], Lindsay<sup>9</sup>, and Matthew<sup>9</sup> Hazel

## ILLUSTRATIONS



Figure 74. Males, from left: Scott<sup>9</sup>, Thomas, and Seth<sup>9</sup> Thomas; females, from left: Barbara<sup>8</sup> (Bond), Polly<sup>9</sup>, and Phoebe<sup>9</sup> Thomas



## ILLUSTRATIONS



Figure 75. Lori<sup>8</sup> (Fariss) and Ted Pennison, wedding 1990

## ILLUSTRATIONS

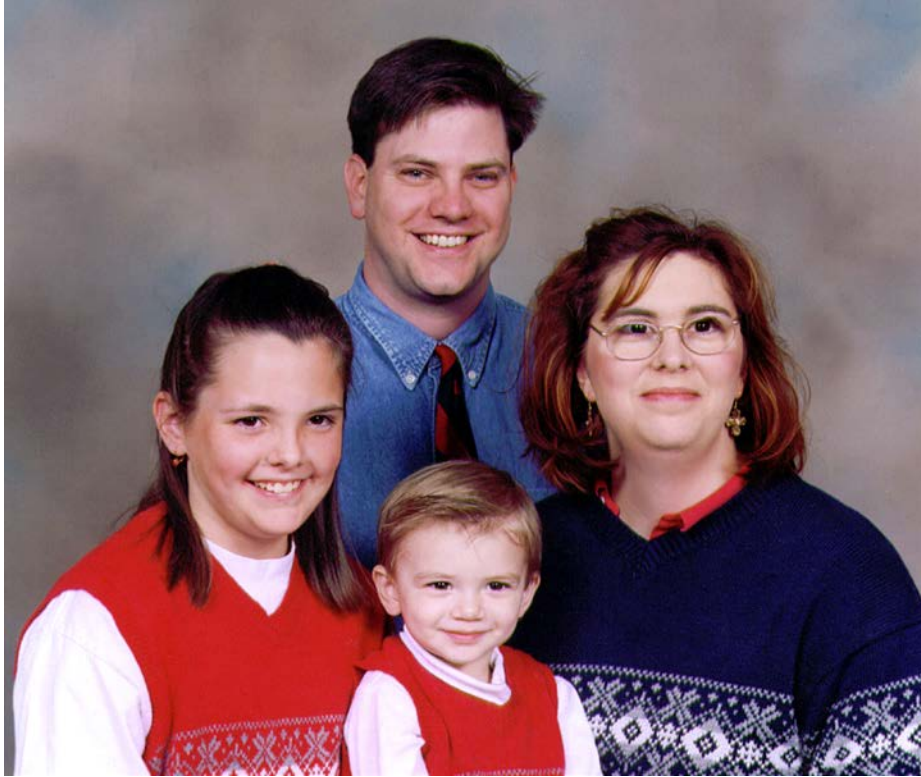


Figure 76. Clockwise from top, Brian, Tracy<sup>8</sup> (Fariss), Connor<sup>9</sup>, and Allison<sup>9</sup> Passantino

## ILLUSTRATIONS



Figure 77. Randy<sup>8</sup> Riggs, City Councilman, Waco, McLennan Co., Tex.