

## ADDITIONAL ILLUSTRATIONS

The following illustrations were originally intended for Alvy Ray Smith, *Edwardian Riggses of America I: Elder Bethuel Riggs (1757–1835) of Morris County, New Jersey, and His Family Through Five Generations* (Boston: Newbury Street Press, 2006), but were removed for space considerations.

PICTURE CREDITS.....	3
1. Bethuel <sup>1</sup> Riggs's first autograph 27 Aug. 1832 to his original deposition.....	7
2. Bethuel <sup>1</sup> Riggs's second autograph 27 Aug. 1832 to the interrogatories.....	7
3. Bethuel <sup>1</sup> Riggs's autograph 18 Apr. 1833 to his second deposition.....	7
4. Autograph of James Shaw, 1858, aged 78 .....	7
5. Autograph of Jonathan <sup>2</sup> Riggs, 3 Oct. 1810 .....	7
6. Signatures of Jonathan <sup>2</sup> Riggs and James Shaw, Jonathan's marriage bond ...	7
7. Marriage record for Ann <sup>3</sup> Shaw and Jesse R. Gililand .....	9
8. Jesse R. Gililand, husband of Ann <sup>3</sup> Shaw.....	10
9. Early Chapel Cem. historical marker, mentions James Shaw .....	11
10. Monument to San Jacinto hero James Shaw .....	12
11. Samuel <sup>3</sup> and Margaret (McCollum) Riggs .....	13
12. Thought to be William F. <sup>4</sup> and Rosetta Gililand, in charcoal.....	14
13. Gravestone of William F. <sup>4</sup> and Rosetta Gililand, Alamogordo, N.M. ....	14
14. Gravestone of Leonard A. <sup>4</sup> Webb and his wife, Mary T. ....	15
15. Gravestones for Eugene S. and Mina M. <sup>4</sup> (Millsbaugh) Bliss.....	15
16. William Thomas Trail, husband of Olive <sup>3</sup> Webb .....	16
17. Gravestones of Paralee and William Henry <sup>3</sup> Webb .....	16
18. Gravestone of Jemima Adeline (Spearman) Webb.....	17
19. Gravestone of William Lewis and Polly Ann <sup>3*</sup> (Young) Penrod .....	17
20. Gravestone of Nathaniel <sup>3</sup> Riggs, Glenbar, Arizona.....	18
21. Gravestones of Nancy Jane <sup>3</sup> (Riggs) and Coleman Bryan Boren, Glenbar, Ariz. ....	18
22. Elizabeth <sup>3</sup> (Riggs) Campbell .....	19
23. Francis E. and George M. <sup>7</sup> Bettle.....	19

## ADDITIONAL ILLUSTRATIONS

24. The Turnbull family and log house, about 1890, Winfield, Lincoln Co., Mo. ....	20
25. Children of John Morgan <sup>4</sup> Turnbull, 1936, Troy .....	20
26. Sons of Richard <sup>4</sup> and Harriet Turnbull, Clinton B. <sup>5</sup> is second from right, the others are unidentified .....	21
27. James Franklin <sup>4</sup> and Julia Louisa (Gardner) Shaw .....	21
28. Sarah Frances <sup>4</sup> (Sitton) (Holliday) Triplett, right, and her twin siblings, Rebecca Jane <sup>4</sup> (Sitton) Stark and James Samuel <sup>4</sup> Sitton .....	22
29. Gravestones of Napoleon B. <sup>4</sup> and Lieuttia A. (Taylor) Shaw .....	23
30. Lee <sup>4</sup> Riggs and his family at their home .....	23
31. Gravestone for Edward Burleson <sup>4</sup> Riggs and four infant children .....	24
32. Gravestone of Washington <sup>4</sup> Riggs, Clear Lake, Iowa .....	25
33. Lucretia Jane <sup>4</sup> (Riggs) Helm, aged 16 .....	25
34. Young Enola Clapsaddle, who would marry Washington <sup>4</sup> Riggs .....	26
35. Gravestone of Gilbert Henry <sup>4</sup> and Annie Laura Webb .....	27
36. Annie Laura and Gilbert Henry <sup>4</sup> Webb, top, with daughters, Jean <sup>5</sup> and Agnes <sup>5</sup> , middle, Helen <sup>5</sup> and Julia Mae <sup>5</sup> , bottom, from left in each row .....	27
37. Octavia (Hays) and Stephen A. <sup>4</sup> Campbell .....	28
38. John Clarence <sup>5</sup> and Mary Ellen (Large) Riggs .....	29
39. Gravestones of Clayton and Jane <sup>2</sup> (Riggs) Webb, Flagspring Cem. ....	30
40. Gravestones of Mary <sup>2</sup> (Riggs) and James Shaw, Lawhon Springs Cem. ....	31
41. Gravestones of Jonathan <sup>2</sup> , Franklin <sup>3</sup> , and Jane (Shaw) Riggs .....	32
42. Gravestone for Anna (Reynolds) (Young) Riggs, Glenbar, Ariz. ....	33
43. Gravestones for James and Nancy Ann <sup>3</sup> (Riggs) Shaw .....	34
44. Gravestones for John W. and Harriet <sup>3</sup> (Armstrong) Millsbaugh .....	35
45. Elizabeth A. <sup>4</sup> Gililand, her husband, Judge Gilmore, and her grandfather, John Gililand (obelisk), Sulphur Lick Cem., Lincoln Co., Mo. ....	36
46. Gravestones of Adam and Jane Pilkington, parents-in-law of Rachael <sup>4</sup> Riggs, Old Nauvoo (Mormon) Burying Ground, Hancock Co., Ill. ....	37
47. Autograph of John Amos Pilkington, marriage license to Rachael <sup>4</sup> Riggs, 1907 .....	37
48. James and Nancy Ann <sup>3</sup> (Riggs) Shaw autographs .....	38

## ADDITIONAL ILLUSTRATIONS

### PICTURE CREDITS

See bibliography of the book for source details

1. Bethuel Riggs Revolutionary War pension file S17046, NARA.
2. Bethuel Riggs Revolutionary War pension file S17046, NARA.
3. Bethuel Riggs Revolutionary War pension file S17046, NARA.
4. From National Archives Pension Application File No. 17754, James Shaw, digital image courtesy Frank James<sup>7</sup> Gruber.
5. Campbell Co., Ky., Court Records, bundle 19, page 8 of 13, filed 3 Oct. 1810, courtesy of Frank James<sup>7</sup> Gruber.
6. Campbell Co., Ky., Marriage Bonds, 1810, FHL 530148.
7. Gililland, *Lincoln Co., Mo., Gililland Marriage Records, 1826–1886*. [Permission not yet obtained.]
8. From the collection of Ruth Bamburg. Used by permission. (At the time of the book publication, I had only a crude version of this photograph as published in Swanson and Swanson, *The Way It Was*, 51.)
9. From the collection of Randy<sup>8</sup> Riggs. Used by permission.
10. From the collection of Randy<sup>8</sup> Riggs. Used by permission.
11. *History of Lee Co., Tex.*, 253. [Permission not yet obtained.]
12. William Franklin Gililland and Mrs. William Gililland, Herman Weisner Papers, Ms249, G/1/14a and G/1/13a, respectively, Archives and Special Collections Department, N.M. State University Library, Las Cruces, N.M.
13. From the collection of Alvy R.<sup>7</sup> Smith (author's father). Used by permission.
14. From *Wesley Chapel Cemetery*. [Permission not yet obtained].
15. From the collection of Dr. Dean Rising. Used by permission.
16. Obituary, William Thomas Trail, *Troy Free Press*, Lincoln Co., Mo., Friday, 15 Feb. 1901. Photocopy courtesy of Marsha Hoffman Rising, CG, FASG.
17. From the collection of Michael S.<sup>6</sup> Webb. Used by permission.
18. From the collection of Melissa Williamson, *Grayson Co. TXGenWeb, Morris Cem. Photographs*. [Permission not yet obtained].
19. From the collection of Delbert Adair, great-great-grandson of the Penrods.

## ADDITIONAL ILLUSTRATIONS

20. From the collection of Melissa Sanders, online at *Glenbar Cem., Glenbar, Graham Co., Ariz.* Used by permission.
21. From the collection of Melissa Sanders, online at *Glenbar Cem., Glenbar, Graham Co., Ariz.* Used by permission.
22. From the collection of Barbara Ruth<sup>7</sup> (Cole) Adams. Used by permission.
23. From the collection of James Peter<sup>8</sup> Bettel. Used by permission.
24. McPheeters and Kelly, *People and Places of Southeast Lincoln Co.*, 37, photocopy courtesy of June<sup>8</sup> Groshong.
25. From *Troy Free Press*, Troy, Lincoln Co., Mo., 29 Nov. 1995, p. 3, in a column entitled "Lincoln County Recollections," by Charles R. Williams, Historian, who attributes the photograph to Eldon Turnbull.
26. From the collection of Paul<sup>7</sup> Caldwell. Used by permission.
27. From the collection of Cindy Casey. Used by permission.
28. From the collection of Betty Wooten. Used by permission.
29. Photographs of gravestones, Melissa Williamson, *Grayson Co. TXGenWeb, Morris Cem. Photographs*. [Permission not yet obtained].
30. *History of Lee Co., Tex.*, 265.
31. From the collection of Randy<sup>8</sup> Riggs. Used by permission.
32. Gravestone photograph, Pat Ludeke, *IAGenWeb Gravestone Photo Project*. [Permission not yet obtained].
33. From "Robert Thomas and Mary Ann (Wallingford) Sparks, Further Notes on Some of Their Descendants," *Sparks Quarterly* 49(2002):5554. [Permission not yet obtained].
34. From the collection of Terry R. Todd. Back of photograph: "S. M. Hartwell, Photographer, De Kalb, Ill. Negatives Preserved."
35. From the collection of Michael S.<sup>6</sup> Webb. Used by permission.
36. From the collection of Michael S.<sup>6</sup> Webb. Used by permission.
37. From the collection of Barbara Ruth<sup>7</sup> (Cole) Adams. Used by permission.
38. From the collection of Ellen<sup>6</sup> Robinson. Used by permission.
39. From the collection of Frank James<sup>7</sup> Gruber. Used by permission.
40. From the collection of John<sup>7</sup> Dorroh. Used by permission.
41. From the collection of Randy H.<sup>8</sup> Riggs. Used by permission.



### ADDITIONAL ILLUSTRATIONS

42. From the collection of Melissa Sanders, online at *Glenbar Cem., Glenbar, Graham, Ariz.* Used by permission.
43. From the collection of Randy H.<sup>8</sup> Riggs. Used by permission.
44. From the collection of Dr. Dean Rising. Used by permission.
45. From my collection.
46. From the collection of Roger A. Brumback, MD. Used by permission.
47. From the marriage license of John Amos Pilkington to Rachael<sup>4</sup> Riggs, 10 Oct. 1907, photocopy courtesy of Roger A. Brumback, MD.
48. *History of Lee Co., Tex.*, 346, signatures on an 1871 land deed. [Permission not yet obtained.]



## ADDITIONAL ILLUSTRATIONS

A handwritten signature in cursive script that reads "Bethuel Riggs".


1. Bethuel<sup>1</sup> Riggs's first autograph 27 Aug. 1832 to his original deposition

A handwritten signature in cursive script that reads "Bethuel Riggs".

2. Bethuel<sup>1</sup> Riggs's second autograph 27 Aug. 1832 to the interrogatories

A handwritten signature in cursive script that reads "Bethuel Riggs".

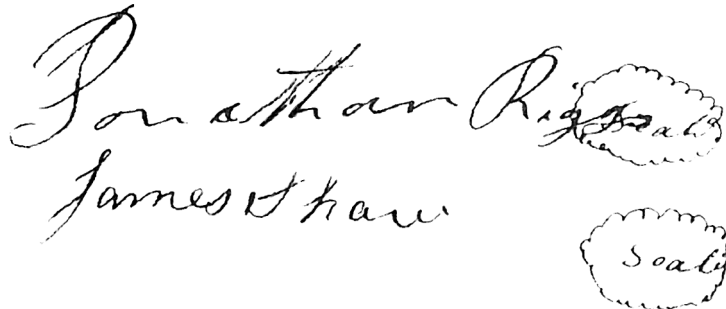
3. Bethuel<sup>1</sup> Riggs's autograph 18 Apr. 1833 to his second deposition

A handwritten signature in cursive script that reads "James Shaw".

4. Autograph of James Shaw, 1858, aged 78

A handwritten signature in cursive script that reads "Jonathan Riggs".

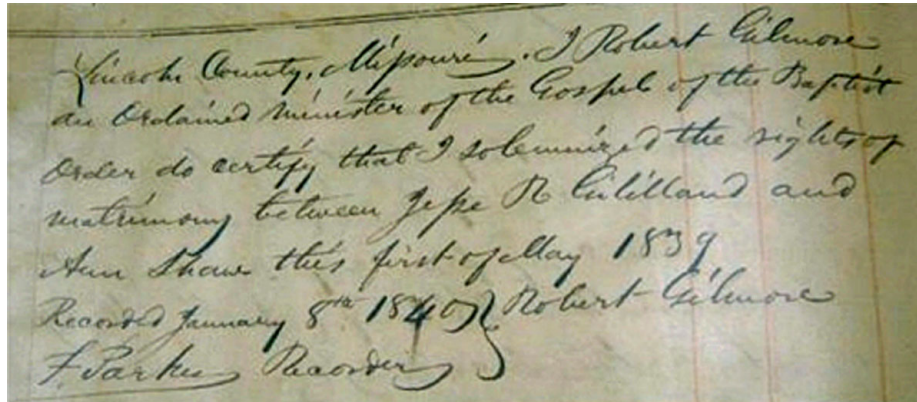
5. Autograph of Jonathan<sup>2</sup> Riggs, 3 Oct. 1810

A handwritten signature in cursive script that reads "Jonathan Riggs". Below it is another handwritten signature in cursive script that reads "James Shaw". To the right of the "Jonathan Riggs" signature is a small, circular, hand-drawn mark. To the right of the "James Shaw" signature is another small, circular, hand-drawn mark.

6. Signatures of Jonathan<sup>2</sup> Riggs and James Shaw, Jonathan's marriage bond

## ADDITIONAL ILLUSTRATIONS

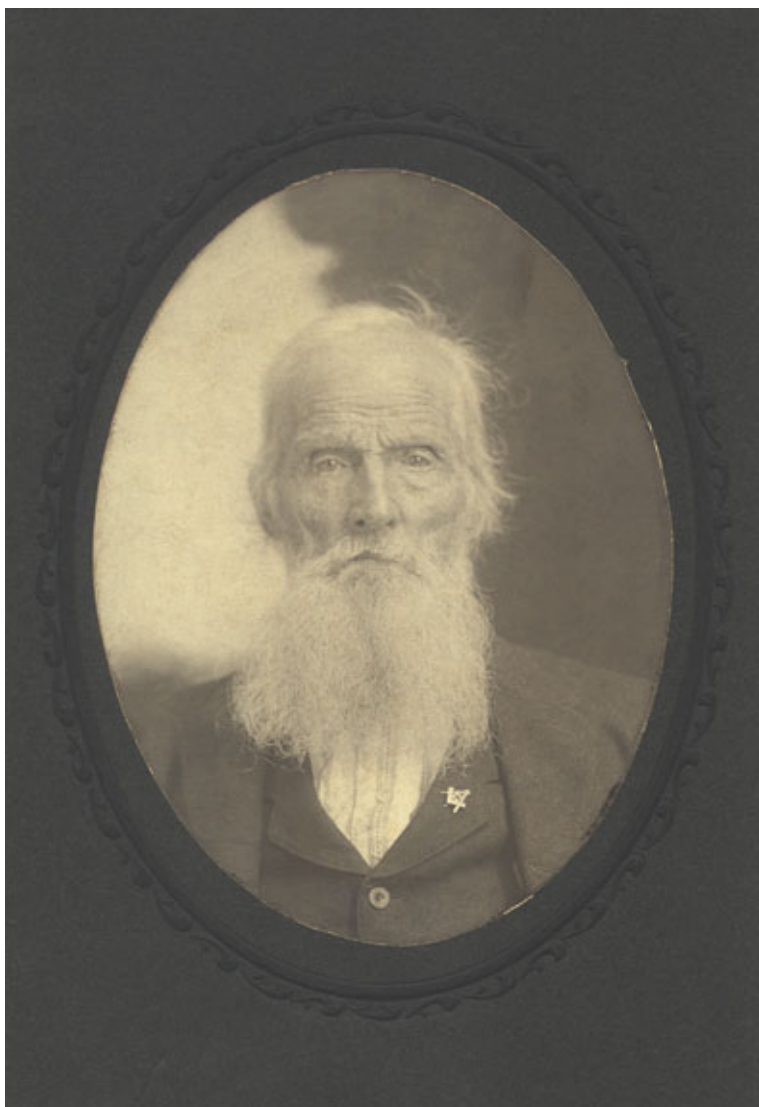
## ADDITIONAL ILLUSTRATIONS



Lincoln County, Missouri. I Robert Gilmore  
an Ordained Minister of the Gospel of the Baptist  
Order do certify that I solemnized the rights of  
matrimony between Jesse R. Gililand and  
Ann Shaw this first of May 1839  
Recorded January 8<sup>th</sup> 1840. Robert Gilmore  
F. Parker Recorder

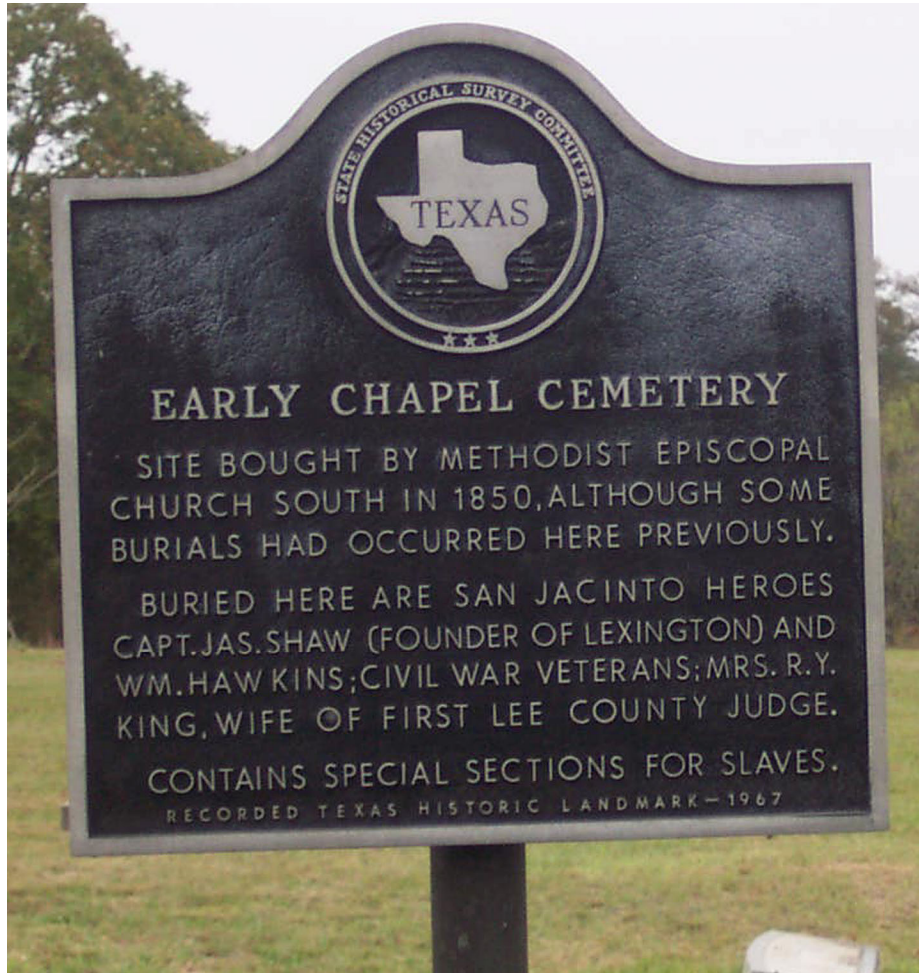
7. Marriage record for Ann<sup>3</sup> Shaw and Jesse R. Gililand

## ADDITIONAL ILLUSTRATIONS



8. Jesse R. Gililand, husband of Ann<sup>3</sup> Shaw

## ADDITIONAL ILLUSTRATIONS



9. Early Chapel Cem. historical marker, mentions James Shaw



## ADDITIONAL ILLUSTRATIONS



10. Monument to San Jacinto hero James Shaw

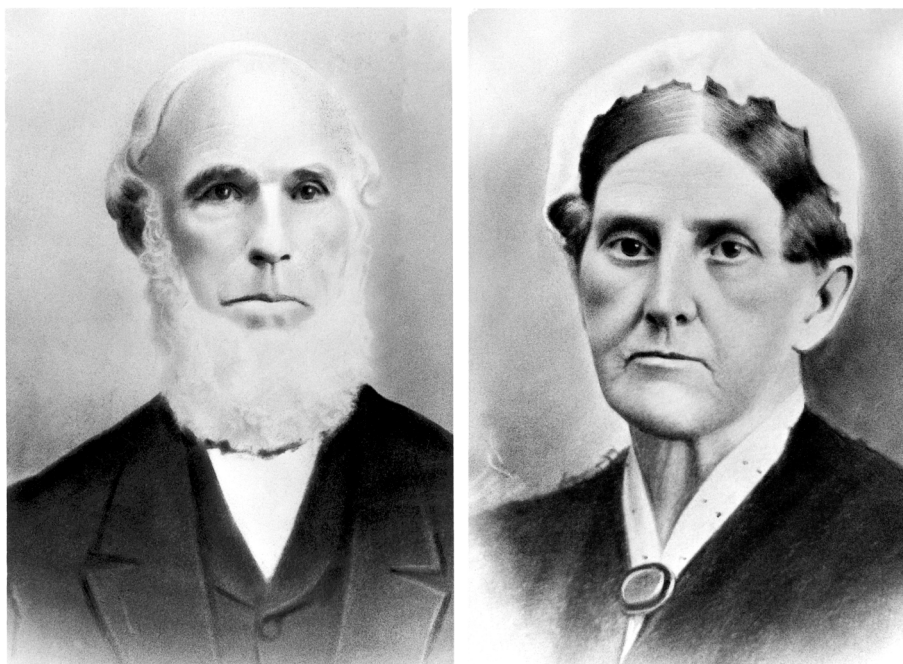


## ADDITIONAL ILLUSTRATIONS



11. Samuel<sup>3</sup> and Margaret (McCollum) Riggs

## ADDITIONAL ILLUSTRATIONS

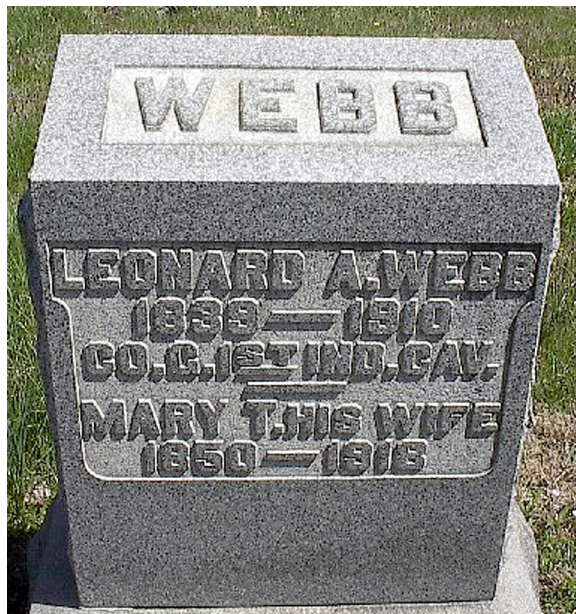


12. Thought to be William F.<sup>4</sup> and Rosetta Gililand, in charcoal



13. Gravestone of William F.<sup>4</sup> and Rosetta Gililand, Alamogordo, N.M.

## ADDITIONAL ILLUSTRATIONS



14. Gravestone of Leonard A.<sup>4</sup> Webb and his wife, Mary T.



15. Gravestones for Eugene S. and Mina M.<sup>4</sup> (Millspaugh) Bliss



## ADDITIONAL ILLUSTRATIONS

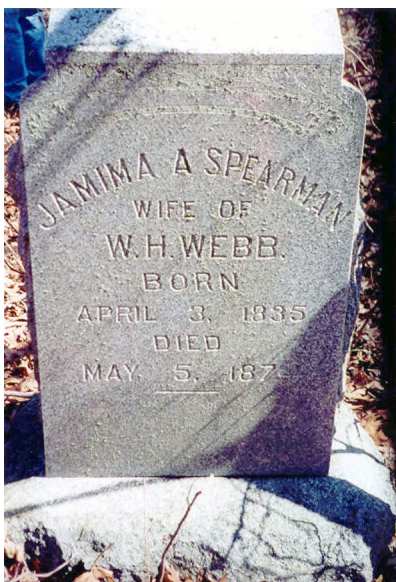


16. William Thomas Trail, husband of Olive<sup>3</sup> Webb



17. Gravestones of Paralee and William Henry<sup>3</sup> Webb

## ADDITIONAL ILLUSTRATIONS



18. Gravestone of Jemima Adeline (Spearman) Webb



19. Gravestone of William Lewis and Polly Ann<sup>3</sup> (Young) Penrod

## ADDITIONAL ILLUSTRATIONS



20. Gravestone of Nathaniel<sup>3</sup> Riggs, Glenbar, Arizona



21. Gravestones of Nancy Jane<sup>3</sup> (Riggs) and Coleman Bryan Boren, Glenbar, Ariz.



## ADDITIONAL ILLUSTRATIONS



22. Elizabeth<sup>3</sup> (Riggs) Campbell



23. Francis E. and George M.<sup>7</sup> Bettel

## ADDITIONAL ILLUSTRATIONS



24. The Turnbull family and log house, about 1890, Winfield, Lincoln Co., Mo.

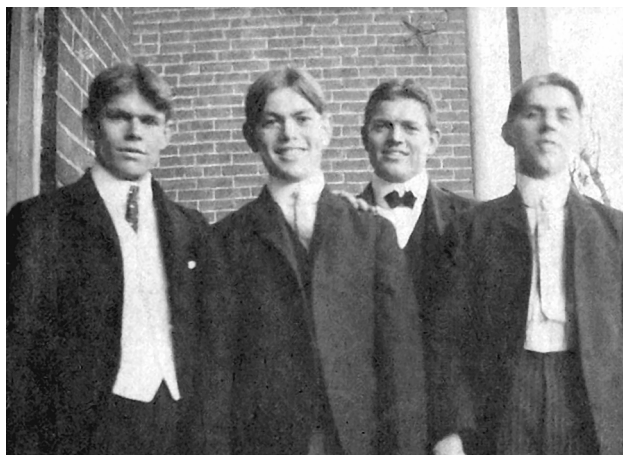
From left: Mary and David<sup>5</sup> Turnbull with daughter Inis [Inez]<sup>6</sup> in front, Albert<sup>5</sup> and Sally<sup>5</sup> Turnbull (twins), Richard<sup>5</sup> and Mary<sup>5</sup> Turnbull with Frank<sup>5</sup> and Lizzie<sup>5</sup> Turnbull in front, (possibly) Jimmy<sup>4</sup> and (possibly) Mary Turnbull, Morgan<sup>4</sup> and Matilda Turnbull with Howard<sup>5</sup> in front. (It is just barely possible that the couple second from right is George W. Turnbull, died April 1890, and Sally Jane<sup>3</sup>, died 1908.)



25. Children of John Morgan<sup>4</sup> Turnbull, 1936, Troy



## ADDITIONAL ILLUSTRATIONS



26. Sons of Richard<sup>4</sup> and Harriet Turnbull, Clinton B.<sup>5</sup> is second from right, the others are unidentified



27. James Franklin<sup>4</sup> and Julia Louisa (Gardner) Shaw

## ADDITIONAL ILLUSTRATIONS

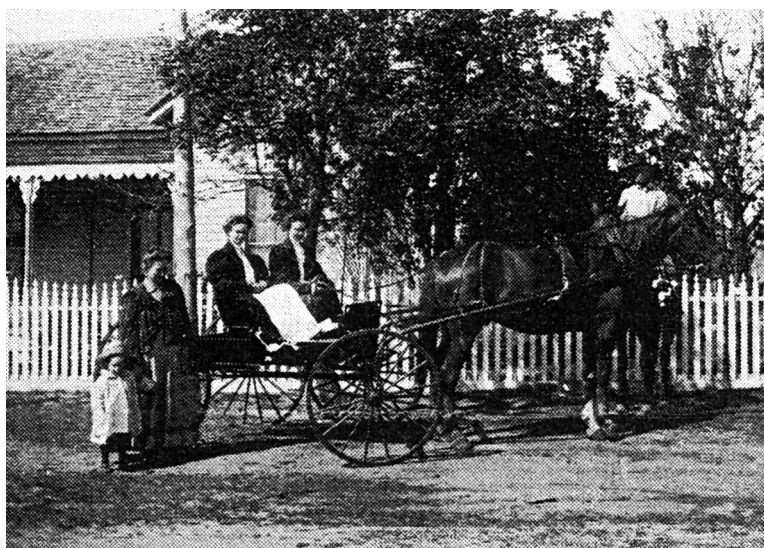


28. Sarah Frances<sup>4</sup> (Sitton) (Holliday) Triplett, right, and her twin siblings, Rebecca Jane<sup>4</sup> (Sitton) Stark and James Samuel<sup>4</sup> Sitton

## ADDITIONAL ILLUSTRATIONS



29. Gravestones of Napoleon B.<sup>4</sup> and Lieuttia A. (Taylor) Shaw



30. Lee<sup>4</sup> Riggs and his family at their home



## ADDITIONAL ILLUSTRATIONS



31. Gravestone for Edward Burleson<sup>4</sup> Riggs and four infant children

## ADDITIONAL ILLUSTRATIONS



32. Gravestone of Washington<sup>4</sup> Riggs, Clear Lake, Iowa



33. Lucretia Jane<sup>4</sup> (Riggs) Helm, aged 16

## ADDITIONAL ILLUSTRATIONS



34. Young Enola Clapsaddle, who would marry Washington<sup>4</sup> Riggs

## ADDITIONAL ILLUSTRATIONS



35. Gravestone of Gilbert Henry<sup>4</sup> and Annie Laura Webb



36. Annie Laura and Gilbert Henry<sup>4</sup> Webb, top, with daughters, Jean<sup>5</sup> and Agnes<sup>5</sup>, middle, Helen<sup>5</sup> and Julia Mae<sup>5</sup>, bottom, from left in each row



## ADDITIONAL ILLUSTRATIONS



37. Octavia (Hays) and Stephen A.<sup>4</sup> Campbell



## ADDITIONAL ILLUSTRATIONS



38. John Clarence<sup>5</sup> and Mary Ellen (Large) Riggs

## ADDITIONAL ILLUSTRATIONS



39. Gravestones of Clayton and Jane<sup>2</sup> (Riggs) Webb, Flagspring Cem.

## ADDITIONAL ILLUSTRATIONS



40. Gravestones of Mary<sup>2</sup> (Riggs) and James Shaw, Lawhon Springs Cem.



## ADDITIONAL ILLUSTRATIONS



41. Gravestones of Jonathan<sup>2</sup>, Franklin<sup>3</sup>, and Jane (Shaw) Riggs

## ADDITIONAL ILLUSTRATIONS



42. Gravestone for Anna (Reynolds) (Young) Riggs, Glenbar, Ariz.

## ADDITIONAL ILLUSTRATIONS



43. Gravestones for James and Nancy Ann<sup>3</sup> (Riggs) Shaw



## ADDITIONAL ILLUSTRATIONS



44. Gravestones for John W. and Harriet<sup>3</sup> (Armstrong) Millspaugh

## ADDITIONAL ILLUSTRATIONS



45. Elizabeth A.<sup>4</sup> Gililand, her husband, Judge Gilmore, and her grandfather, John Gililand (obelisk), Sulphur Lick Cem., Lincoln Co., Mo.



## ADDITIONAL ILLUSTRATIONS

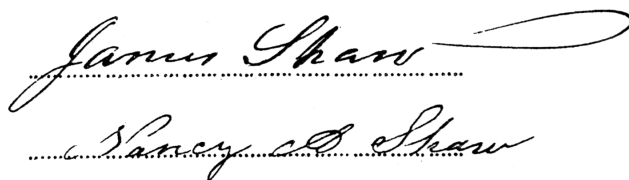


46. Gravestones of Adam and Jane Pilkington, parents-in-law of Rachael<sup>4</sup> Riggs, Old Nauvoo (Mormon) Burying Ground, Hancock Co., Ill.

*John Amos Pilkington*

47. Autograph of John Amos Pilkington, marriage license to Rachael<sup>4</sup> Riggs, 1907

## ADDITIONAL ILLUSTRATIONS

The image displays two handwritten signatures in cursive script. The top signature reads "James Shaw" and the bottom signature reads "Nancy A. Shaw". Both signatures are written in dark ink on a light background. The signatures are positioned above a horizontal dotted line.

48. James and Nancy Ann<sup>3</sup> (Riggs) Shaw autographs